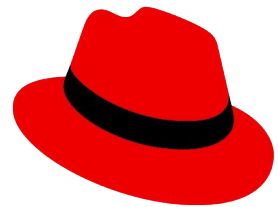


Red Hat
Summit

Connect

OpenTelemetry

Was macht eigentlich mein verteiltes System?

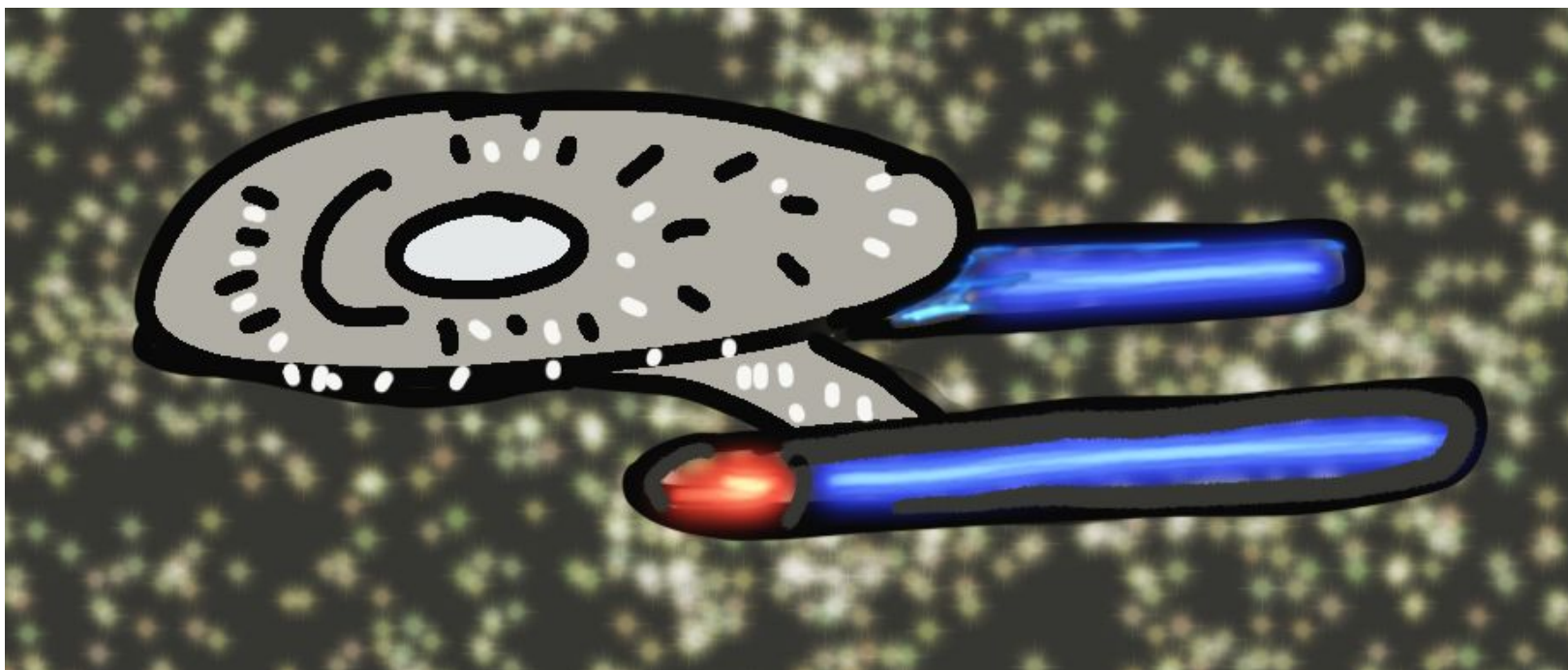


Red Hat

Heiko W. Rupp

Senior Principal Software Engineer
Red Hat

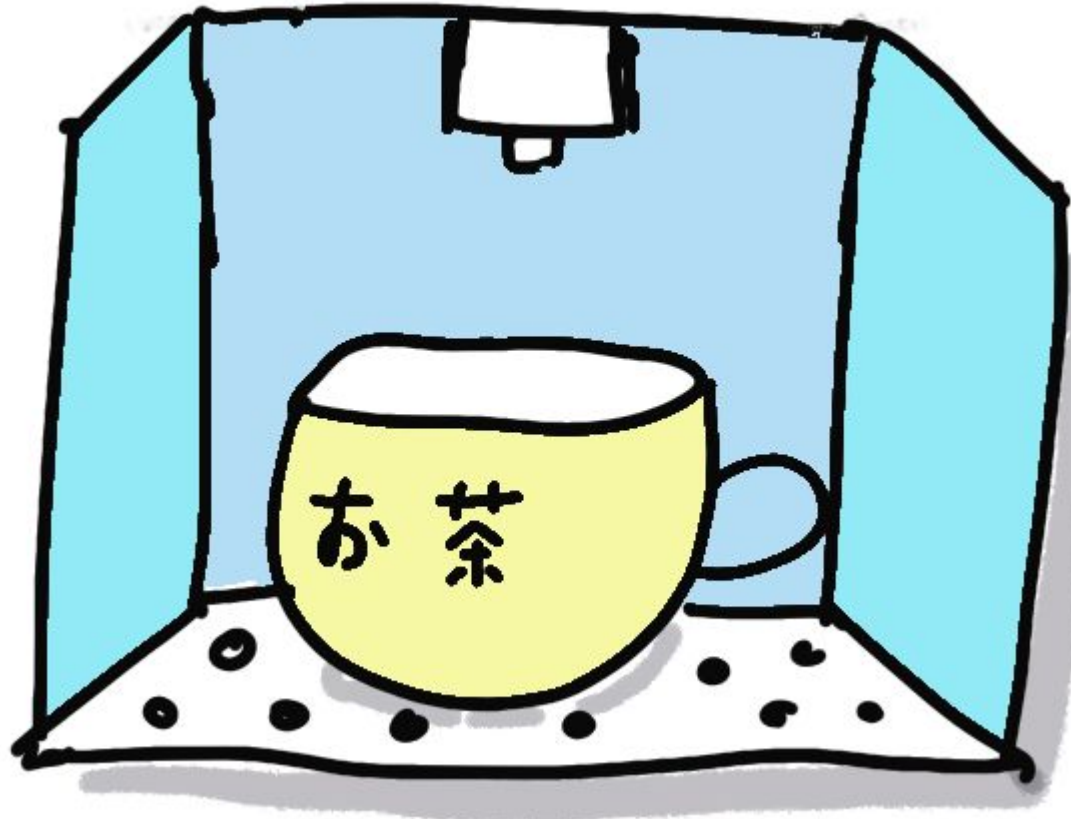
OBSERVABILITY: טיה



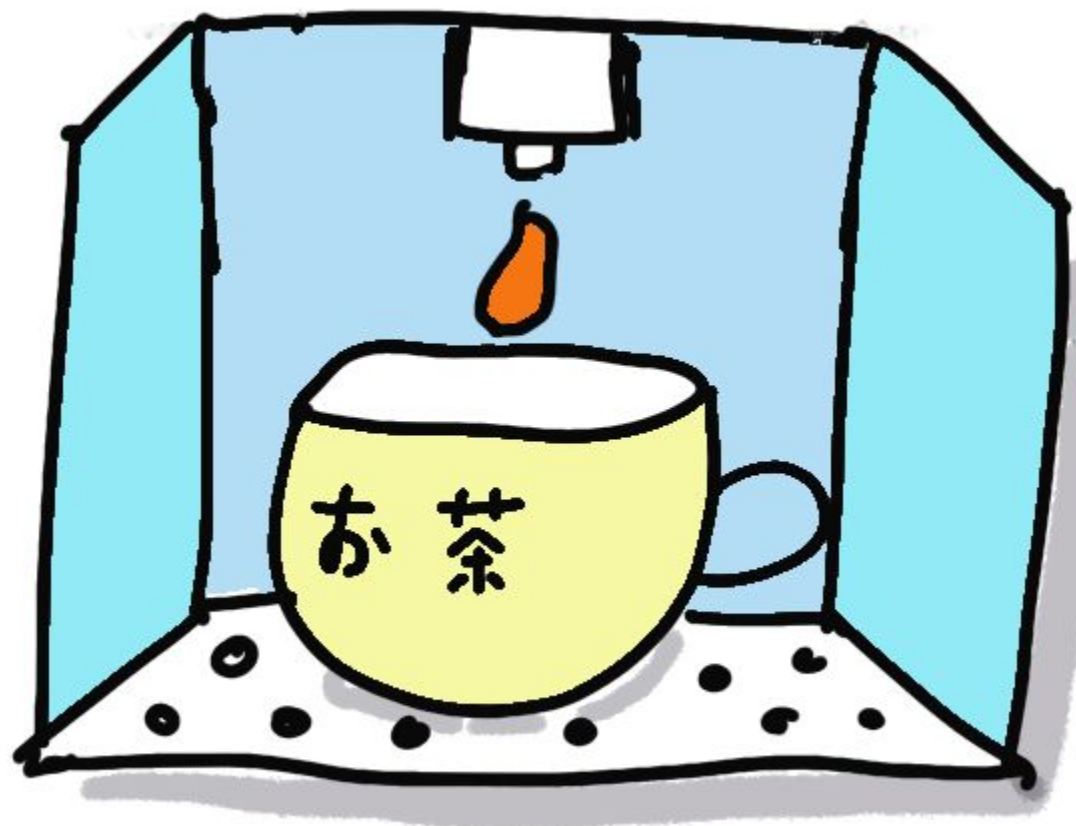
Jeder kennt es...



Tea! Earl Grey!
Hot







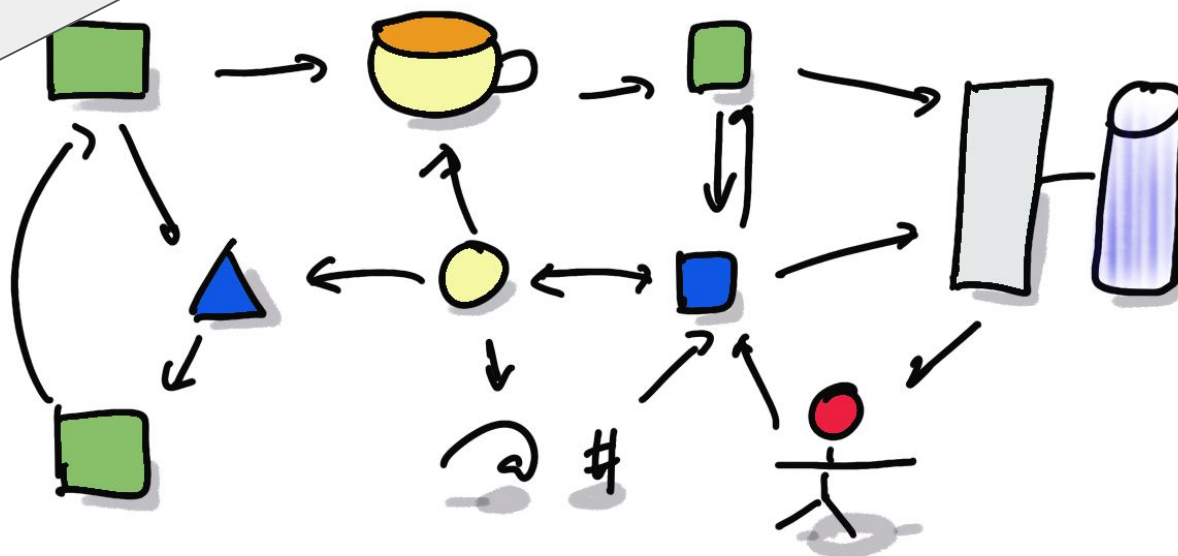


Geordi! Warum ist
der Replikator so
langsam?

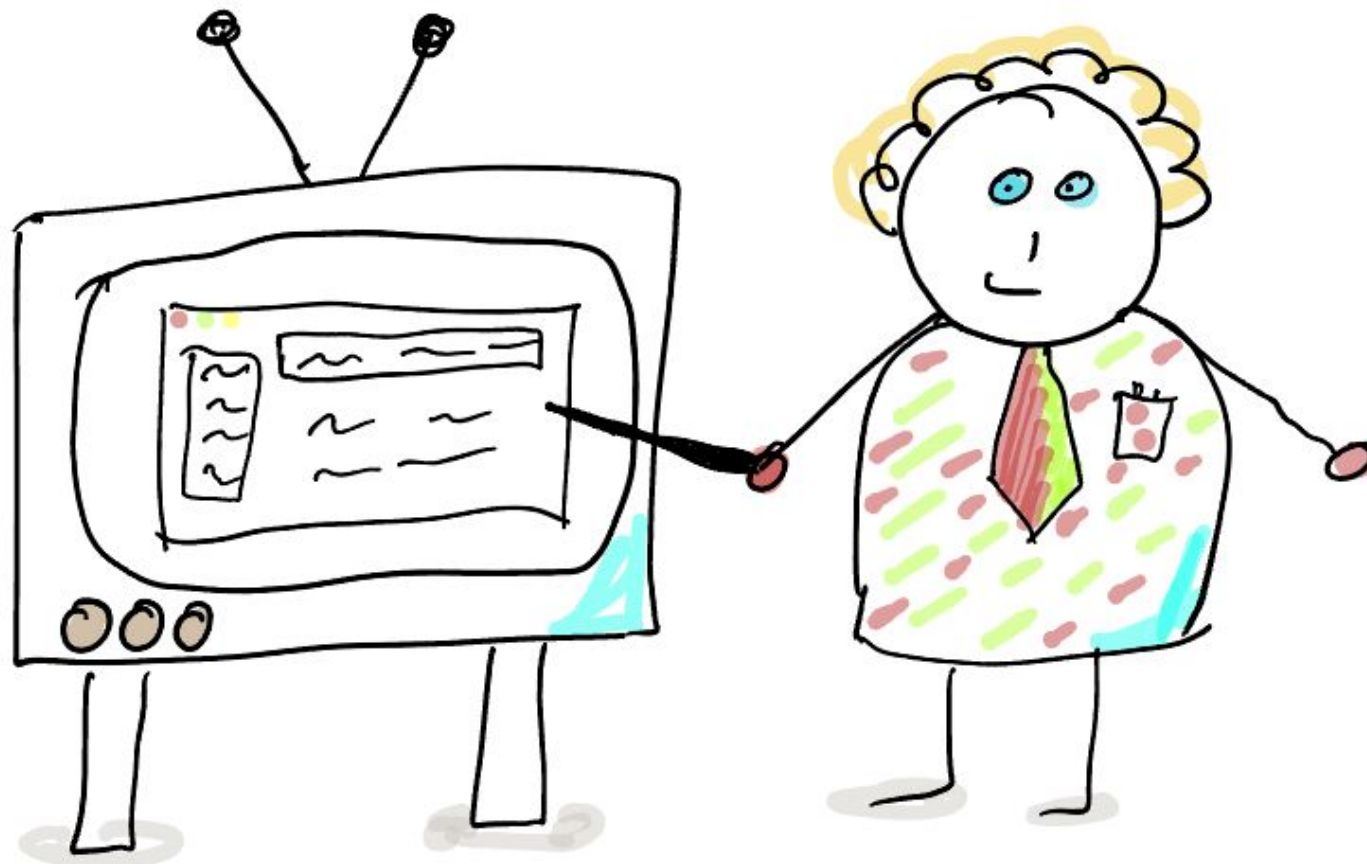
Mal sehen, Auf den
Schirm!

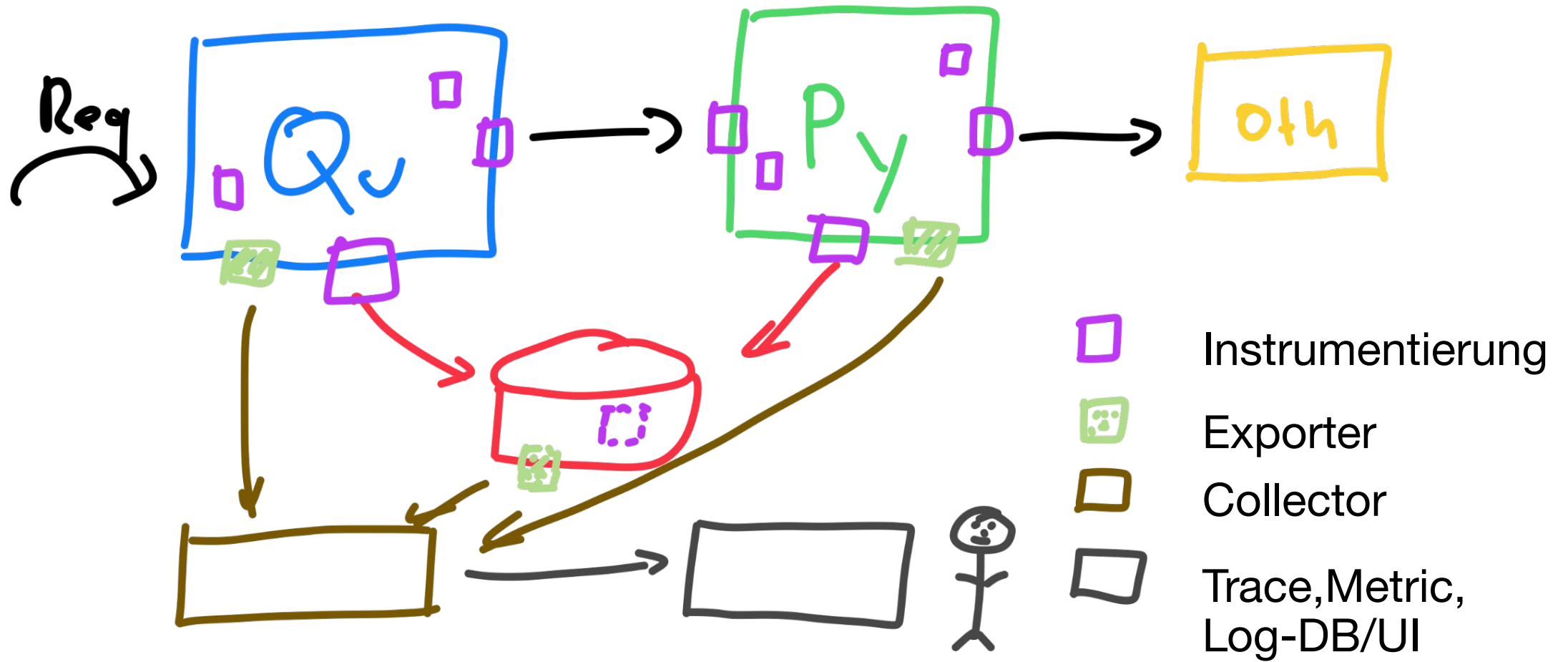


Das sieht kompliziert aus!
Geht das nicht besser?



Ja, es geht besser! Mit OpenTelemetry





Instrumentierung Quarkus

Vieles geht automatisch

```
<dependency>  
  <groupId>io.quarkus</groupId>  
  <artifactId>quarkus-opentelemetry</artifactId>  
</dependency>
```

```
<dependency>  
  <groupId>io.opentelemetry.instrumentation</..>  
  <artifactId>opentelemetry-jdbc</artifactId>  
</dependency>
```

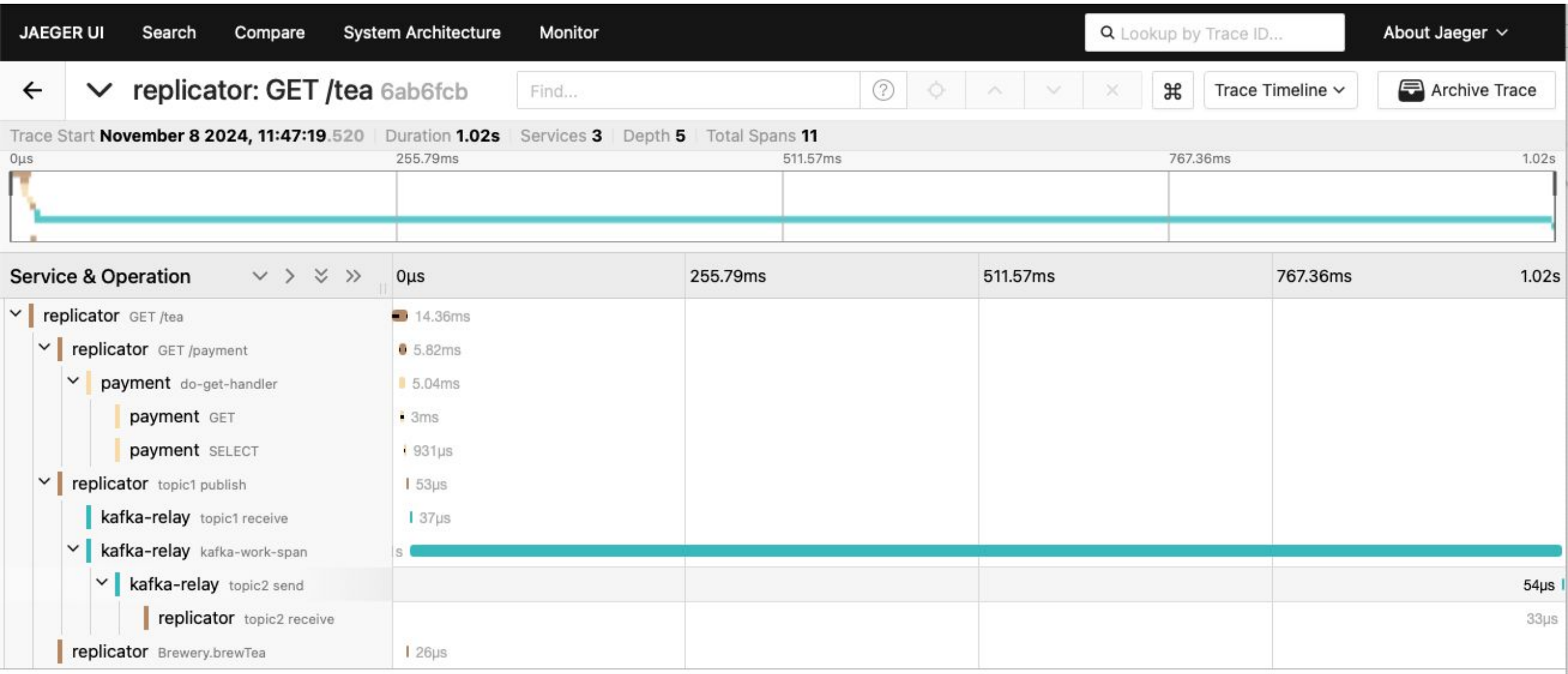
Instrumentierung Quarkus

Explizit von Hand

```
@ApplicationScoped
public class Brewery {

    @WithSpan()
    void brewTea (@SpanAttribute (value = "kind-of-tea")
                 String kind) tea) { ...
```

Trace-View in Jaeger



Red Hat
Summit

Connect

Thank you



[linkedin.com/company/red-hat](https://www.linkedin.com/company/red-hat)



[facebook.com/redhatinc](https://www.facebook.com/redhatinc)



[youtube.com/user/RedHatVideos](https://www.youtube.com/user/RedHatVideos)



twitter.com/RedHat