

Red Hat Enterprise Linux

What's new in RHEL 9.4 and 8.10

Ahmed Dahia
RHEL Specialist Solution Architect
Europe Middle East and Africa

Jürgen Fladt
RHEL Sales Specialist Platform
Red Hat Germany

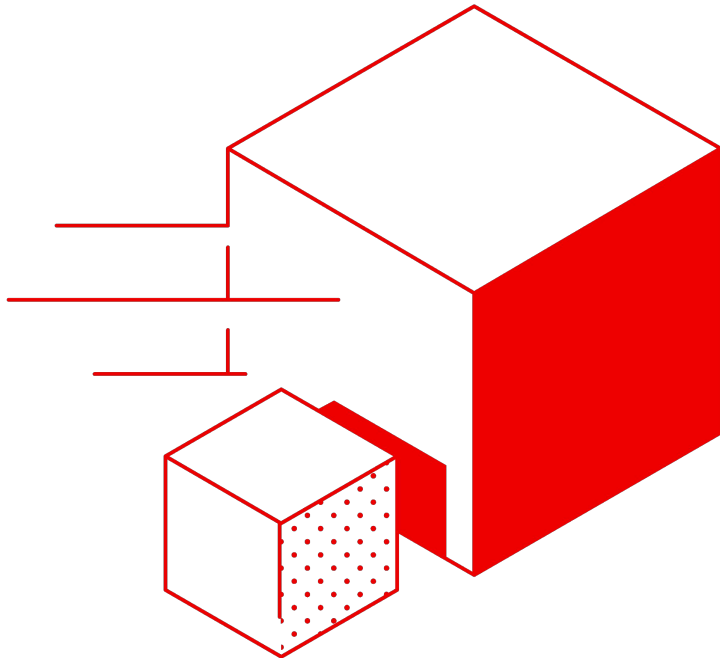
What we'll discuss today

- ▶ Summit announcements
- ▶ Technical features
- ▶ Red Hat Satellite 6.16
- ▶ Red Hat Insights
- ▶ Q & A

Red Hat Summit Announcements

Image mode for Red Hat Enterprise Linux

Combining the power of RHEL with the benefits of containers



All RHEL users benefit from standardization

Simplify operating system (OS) portability across hybrid cloud environments



DevOps teams can reduce platform and application friction

Integrate the operating system into continuous integration and continuous delivery (CI/CD) and GitOps workflows



Security teams can make their jobs far less complex

Apply container security tools to the base elements of the operating system

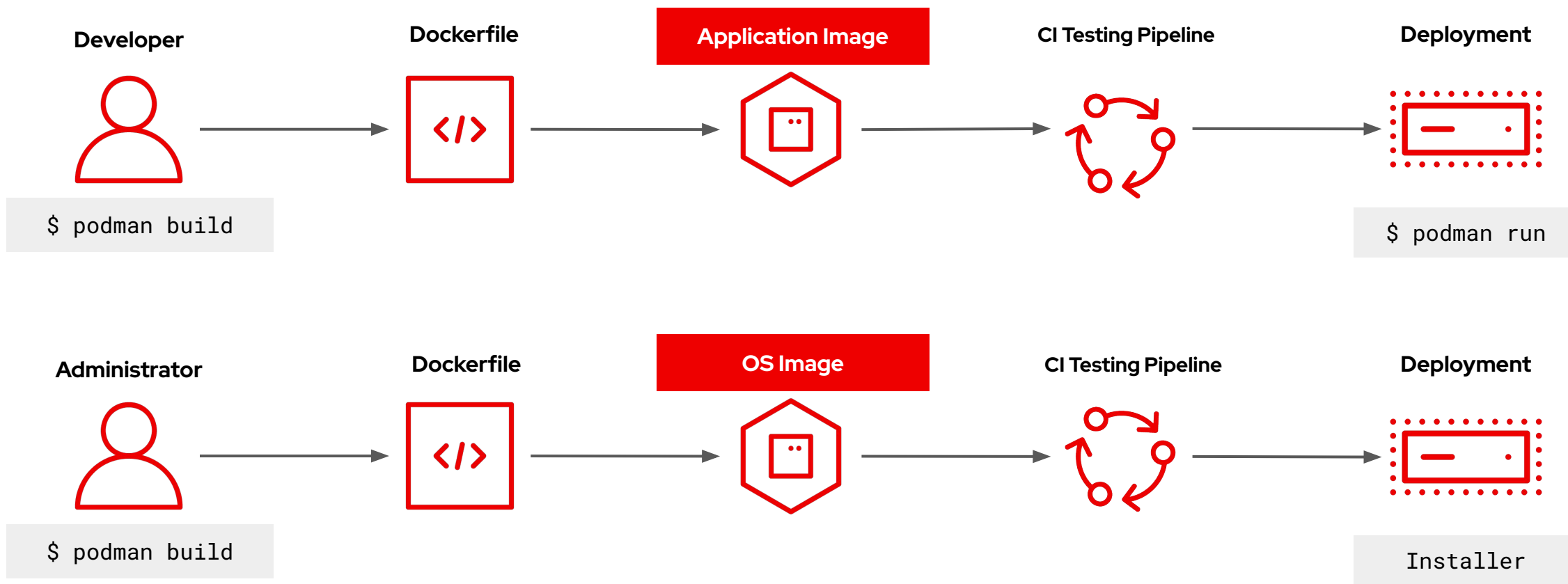


Solution providers can more easily deliver offerings

Build, test, and distribute Red Hat Enterprise Linux-based applications more easily

Container workflows now drive the operating system

Build, Test, Share, Deploy just like an application



New!

Introducing image mode for Red Hat Enterprise Linux

Combining the power of RHEL with the benefits of containers

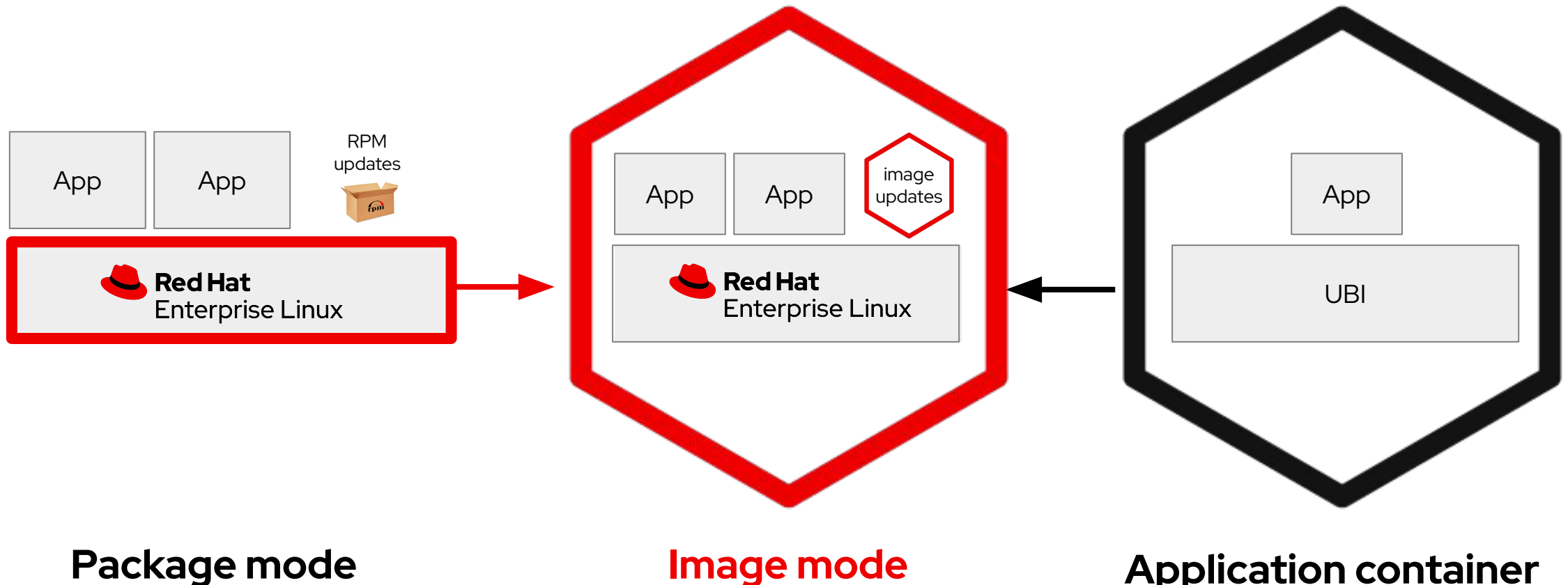


Image mode for Red Hat Enterprise Linux

Simple. Consistent. Anywhere.

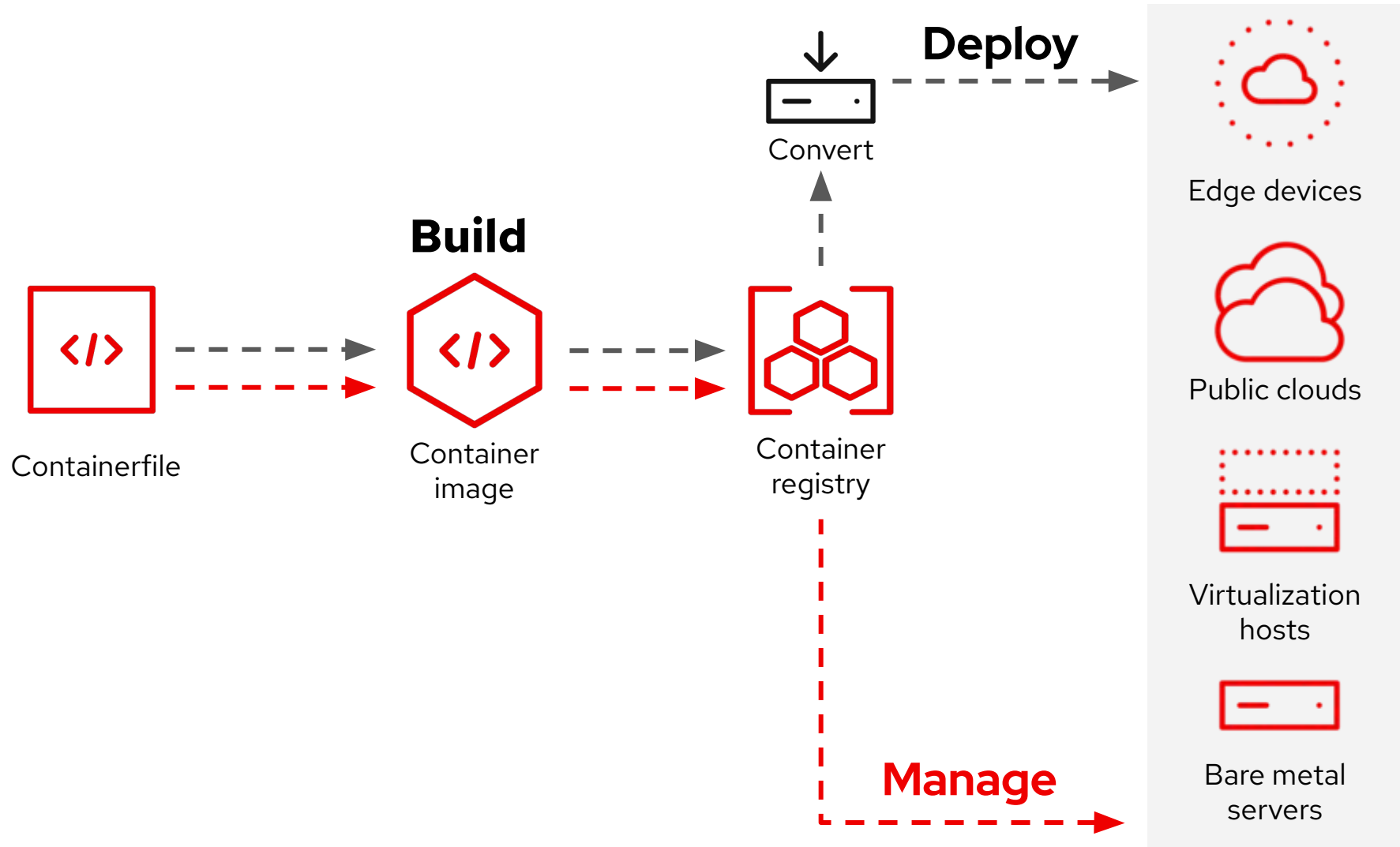


Image mode for RHEL

Encapsulate differences in a sequence of builds

```
# Derive standard operating environment
FROM rhel9/rhel-bootc:latest

RUN dnf install -y [system agents]
[dependencies] && dnf clean all

COPY [unpackaged application]
COPY [configuration files]

RUN [config scripts]
```

```
# Derive database server from SOE
FROM corp-repo/corp-soe:latest

RUN dnf install -y [database]
[dependencies] && dnf clean all

COPY [configuration files]

RUN [config scripts]
```


bootc

A/B booting of container images



bootc upgrade

Download and stage an updated container image.

- Automatic updates on by default. Configurable using `bootc-fetch-apply-updates.timer`

bootc rollback

Rollback to the previous state. Staged updates are discarded

bootc switch

Change to a different reference image

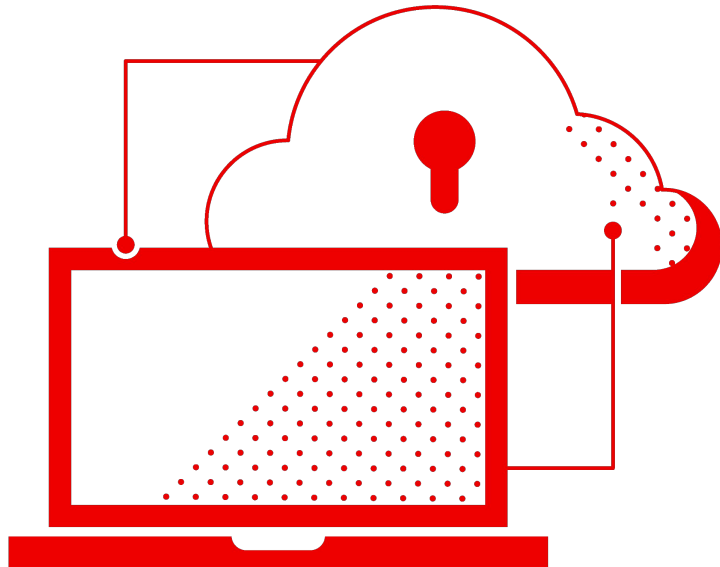
bootc install

Install container image **to-disk** or **to-filesystem**

- [Man page](#)
- <https://github.com/containers/bootc>
- <https://github.com/containers/podman-desktop-extension-bootc>

RHEL Lightspeed brings Linux to the next generation of IT talent

Intelligent, natural language processing capabilities designed to bridge the skills gap



RHEL Lightspeed is currently in the planning stages.



Improve the productivity and efficiency of operations and developer teams by integrating AI into the operating system



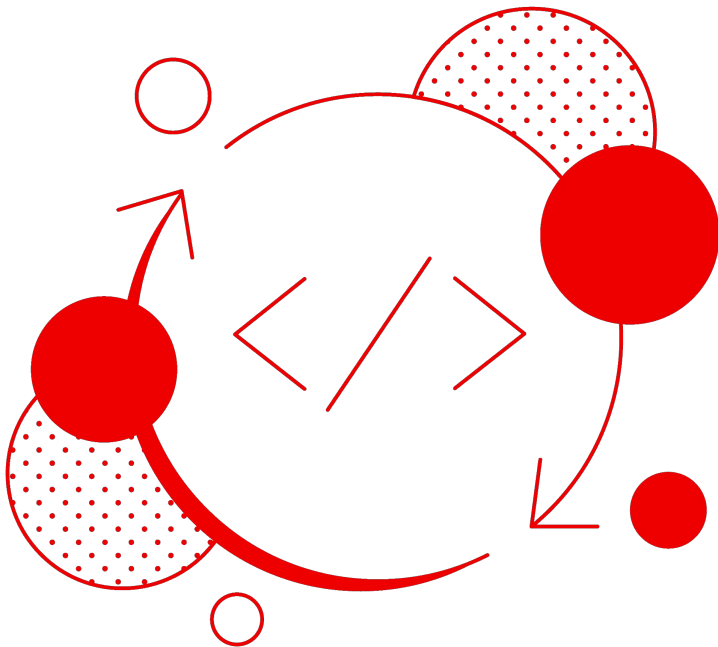
Simplify enterprise planning and system administration, improve performance, and enhance security







Extend expertise to architects and operators, from the novice system administrator to the most senior architect

Podman Desktop AI Lab simplifies AI adoption for developers

Brings key open source tools and AI models to local development environments



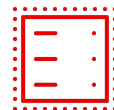
-  **Build, test, and run** generative AI-powered applications in containers
-  **Use a recipe catalog** to jump start applications like chatbots, text summarizers, and code generators
-  **Experiment in a playground environment** that gives users space to run large language models locally
-  **Create prototypes** using a curated list of lightweight and quantized open source models

RHEL 9.4 simplifies standard operating environments across the hybrid cloud

New enhancements continue to improve efficiency, flexibility, and security



Red Hat Insights image builder enhanced with proactive guidance



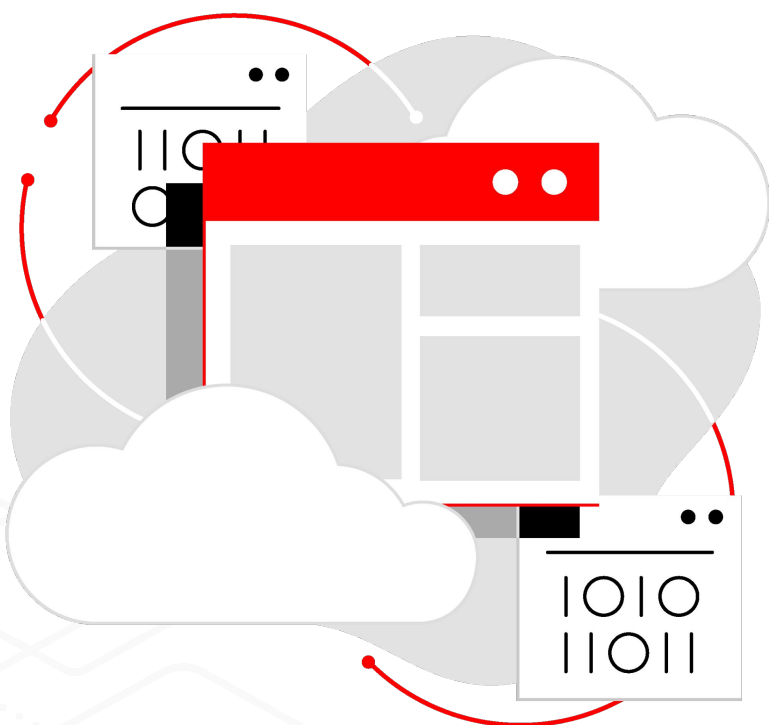
Full support for virtualization on the ARM 64 platform



Includes passkey authentication to simplify security and compliance

Red Hat Insights with proactive guidance for image builder

Standardize foundational IT technologies to create a force multiplier



Coming soon

Proactively provides recommendations to create standard operating environment (SOE) images based on RHEL

Analyzes selected packages and recommends related, relevant packages to include

Recommends repositories to find packages that are not available in the currently selected repositories

Highlights upcoming life cycle milestones to prepare for possible upgrades

Get full support for RHEL virtualization on the ARM 64K platform

A continuing commitment to hardware ecosystem flexibility



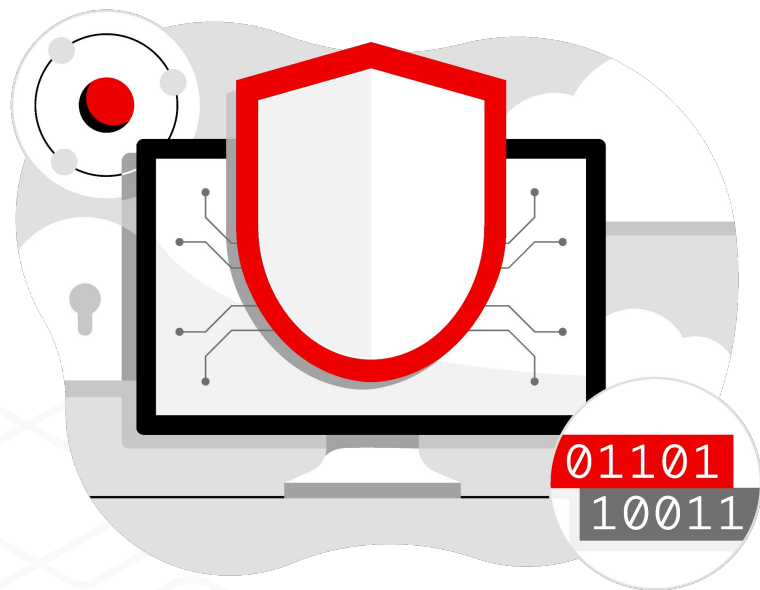
Get more flexible allocation of resources with virtualization

Manage software-controlled configurations

Gain space and cost efficiency with virtual machines

Yubico has fully tested and verified passkey authentication on RHEL 9.4

Simplify security and compliance with passwordless authentication



Multi-factor authentication
using FIDO2-compliant passkey

Complies with Zero Trust
Architecture security model

Strong authentication
for centrally managed users

Technical updates

Workloads



RHEL for SAP workloads



- ▶ On-demand Marketplace offers for RHEL for SAP
- ▶ Support for SAP HANA's "indexserver crash restart"

RHEL for SQL Server

- ▶ SQL Server 2022 now supported on RHEL 8 and 9
- ▶ Support for installing SQL Server 2022 on RHEL 9 via system role



Automation and management

Red Hat Enterprise Linux web console

A user-friendly, web-based interface to help simplify management and monitoring of RHEL systems

Add WireGuard VPN

Name

wg0

Private key

☐ Generated

☒ Paste existing key

Public key

Public key will be generated when a valid private key is entered

Listen port

0

Will be set to "Automatic"

IPv4 addresses

Example, 10.0.0.1/24, 1.2.3.4/24

Multiple addresses can be specified using commas or spaces as delimiters.

Peers

Add peer

No peers added.

Add

Cancel

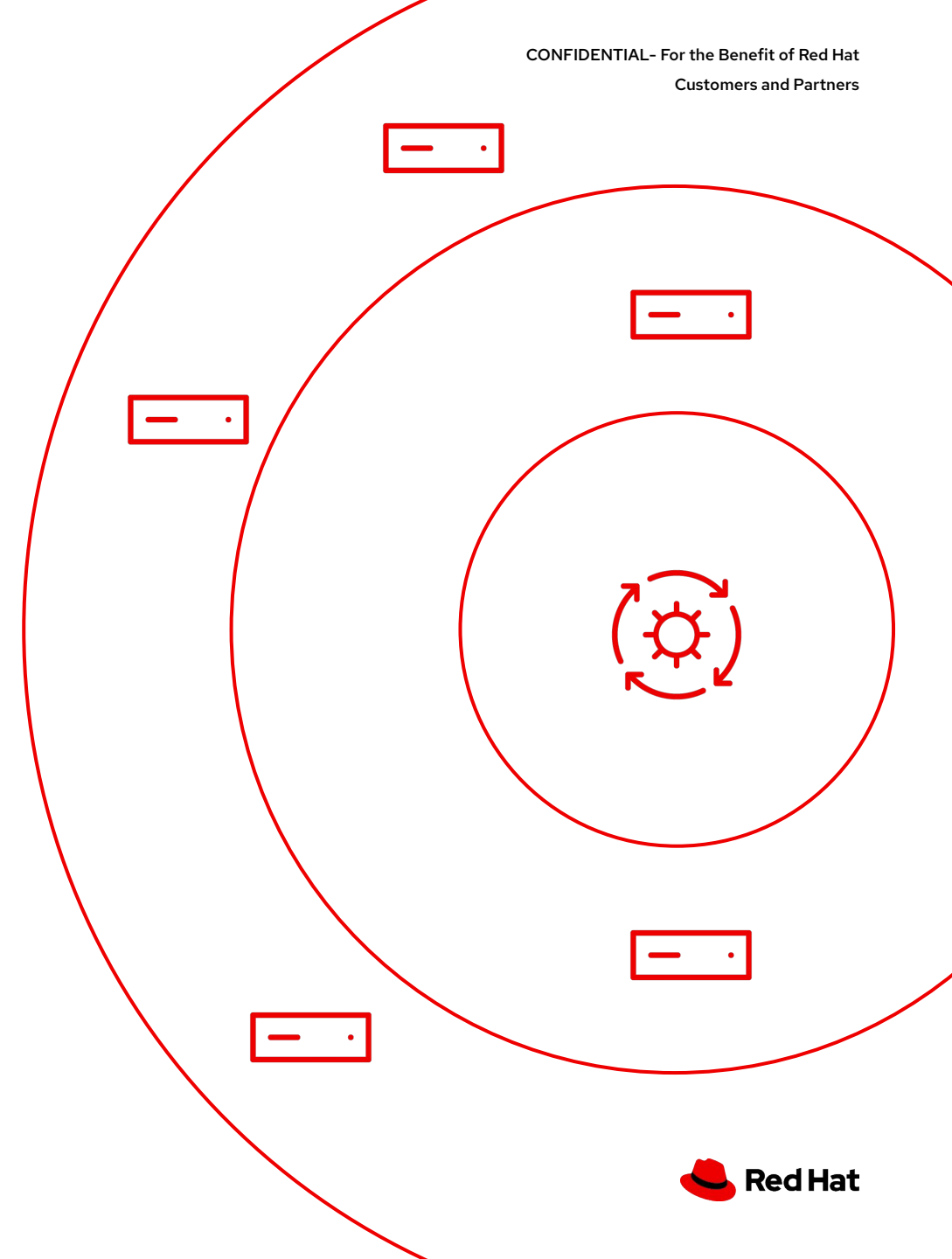
- ▶ Support for virtual machine external snapshots (including live snapshots) (RHEL 9.4 only)
- ▶ Ability for web console to generate Ansible or shell script content for kernel dump configuration
- ▶ **Tech Preview:** Ability to configure a WireGuard VPN in the web console (RHEL 9.4 only)
- ▶ Enhancements to managing RHEL for Edge (rpm-ostree) deployments with the web console (RHEL 9.4 only)

RHEL system roles

A collection of supported Ansible roles included in a RHEL subscription to help automate consistent and repeatable OS tasks and configurations.

Role enhancements include:

- ▶ New system roles:
 - fapolicyd
 - bootloader
 - LVM snapshot
 - sudo
- ▶ System role support for RHEL for Edge (rpm-ostree) systems
- ▶ AD integration role support for dynamic DNS updates

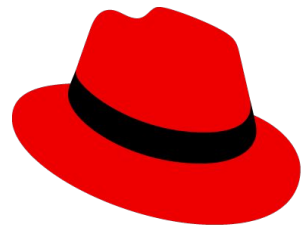


Services and addons

Satellite 6.16

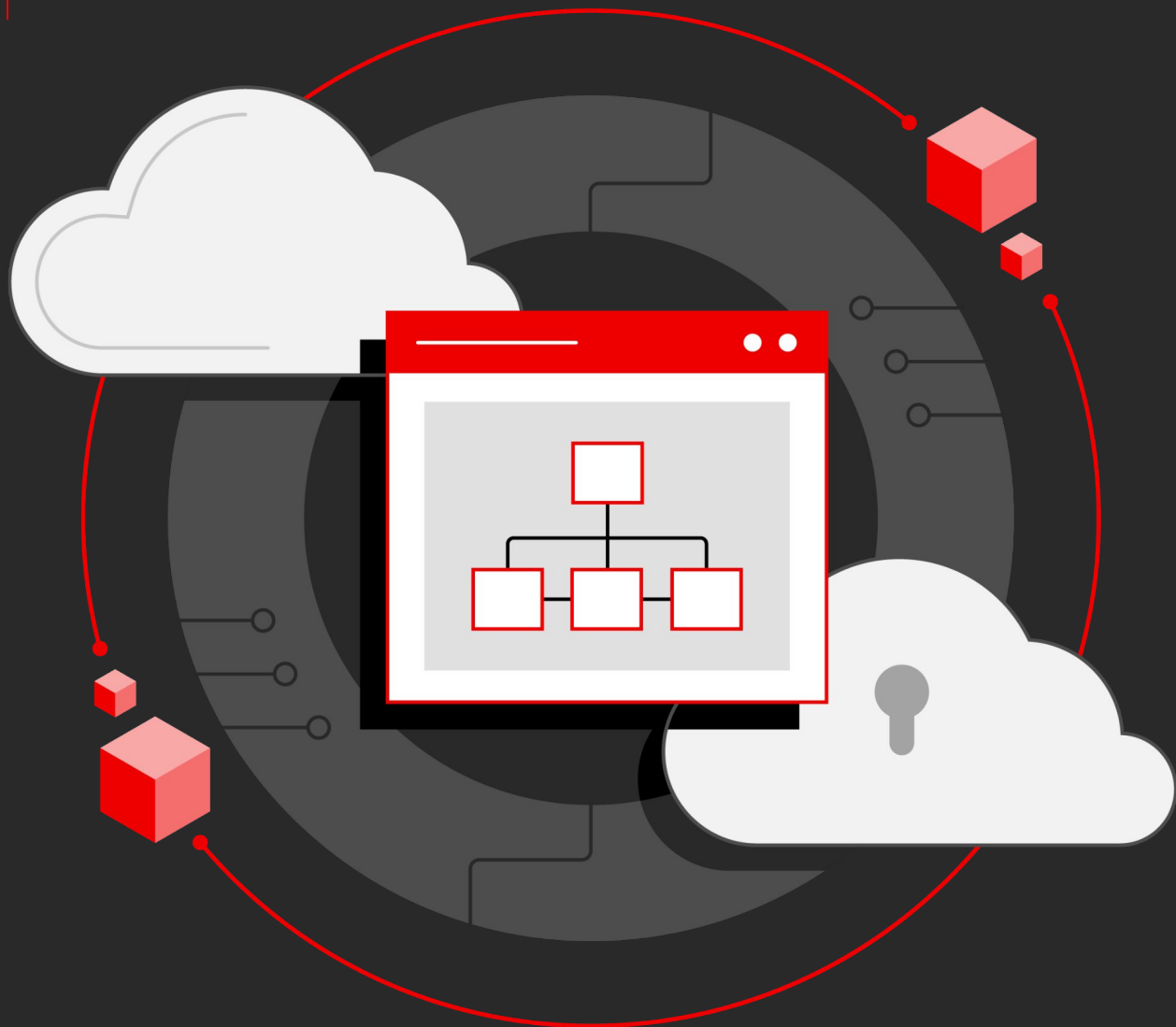


Ship Date:
November 5, 2024



Red Hat
Satellite

- ▶ Simple Content Access only
- ▶ Online Backup
- ▶ Container Push
- ▶ Integrated OpenSCAP remediation
- ▶ RHEL 9 Support
- ▶ New Hosts UI (Tech Preview)



Simple Content Access

- ▶ In 6.16, Satellite only supports Simple Content Access content access mode..
- ▶ [More information here.](#)



Online Backups

- ▶ With online backups, only services that affect the consistency of the backup are shut down while the backup process is running.
- ▶ Stops workers (so no syncs, no REX jobs), but otherwise Satellite remains operational and jobs are queued.
- ▶ Online backups replaces snapshot backups.



Container Push

- ▶ Containers are pushed to a specified organization and product.
- ▶ User authentication is required for pushes.
- ▶ The Satellite container registry follows OCI specifications.
- ▶ Any method of pushing containers to a registry should work out of the box.
- ▶ Storage of image mode images is supported but official support of image mode targeted for 6.17.



RHEL 9 Support

► Three upgrade methods:

- Leapp
- Backup and Restore
- Satellite Clone

Red Hat management tools

Navigate Infrastructure Complexity



Insights

Gain a clear view across your Red Hat deployments, helping you better manage your hybrid, on-premises, and cloud environments.



Satellite

Enables you to improve the reliability, availability, security and compliance of your RHEL systems.



Web Console

A web-based management interface to simplify deployment, daily administration and complex tasks



RHEL System Roles

A collection of supported Ansible roles that ensure consistent workflows and streamline the execution of manual tasks



Insights

How does Red Hat Insights help me?

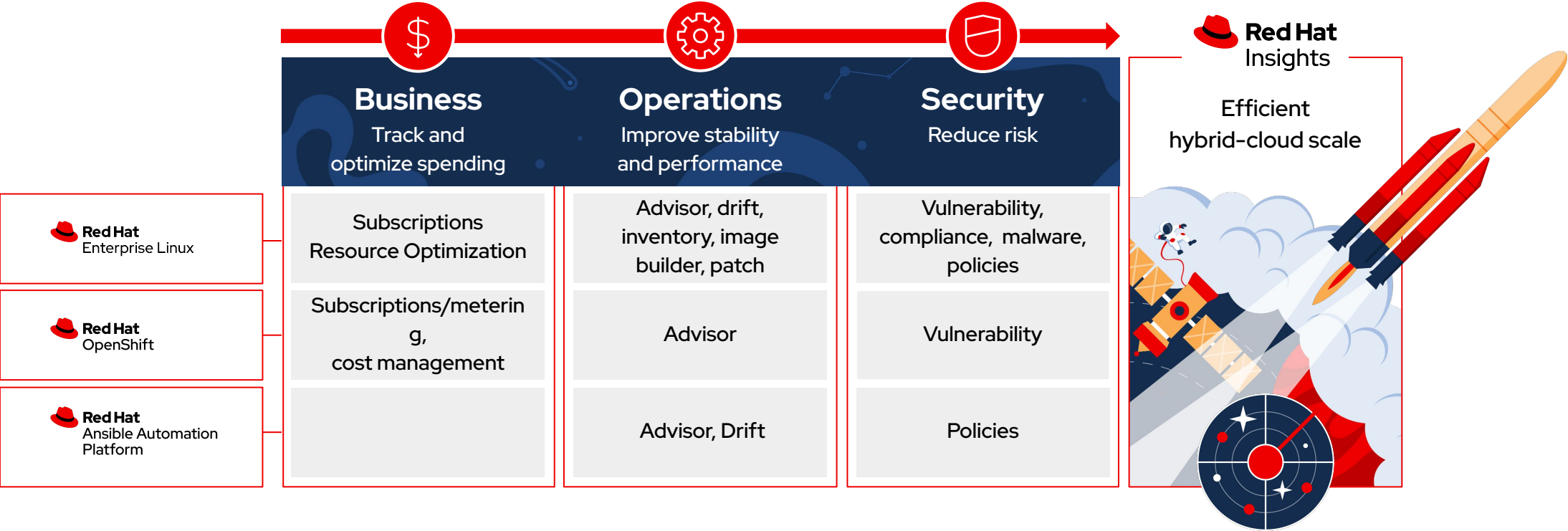
Use Red Hat's expertise and knowledge to evaluate and manage your systems



- ▶ Provision new systems in the cloud or on-premises
- ▶ Configuration review to make sure systems are setup correctly
- ▶ Easily identify interoperability issues from the hypervisor or cloud, through the OS, and through the application stack
- ▶ Centralized view of all CVEs, patches, and compliance risks
- ▶ Identify drift to make sure systems are the same
- ▶ Know how many subscriptions you are using in seconds

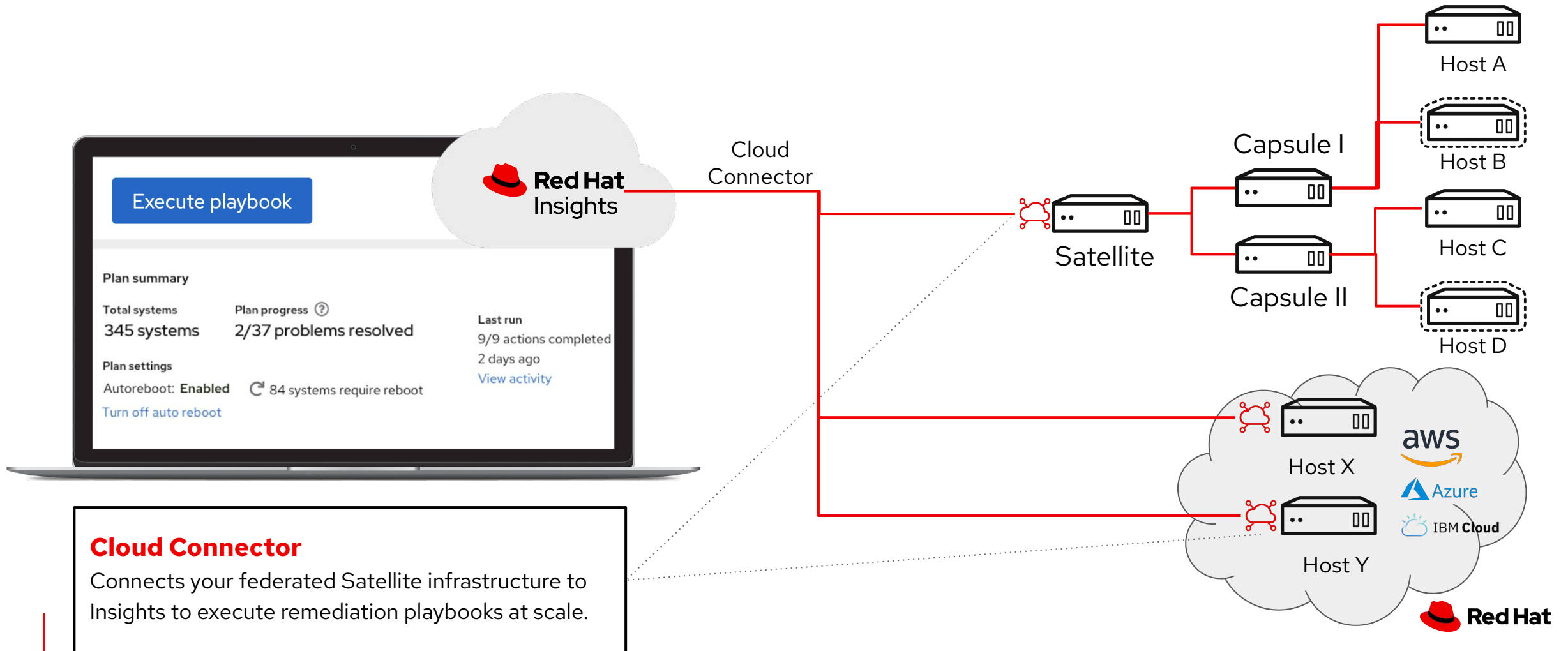
Red Hat Insights

Aligning themes to services across platforms



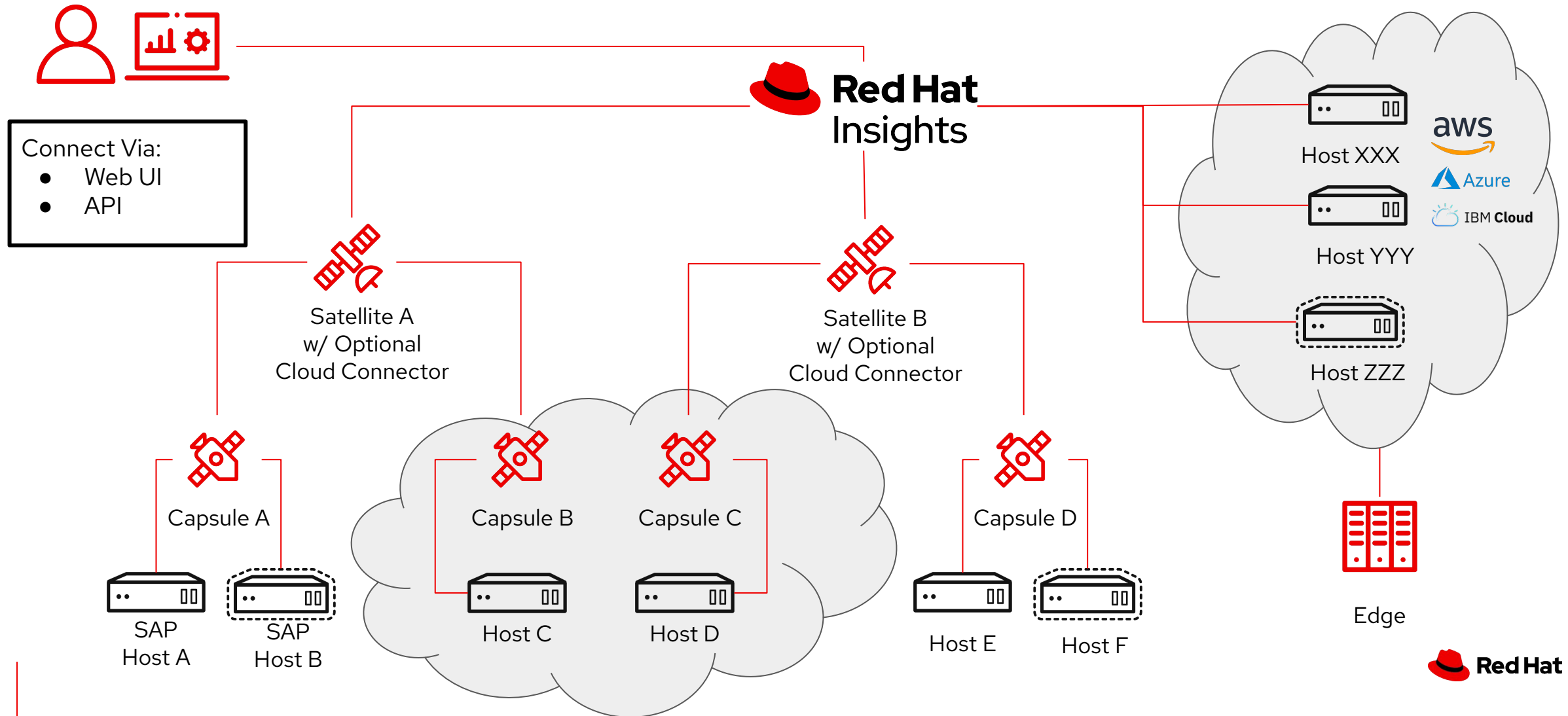
Red Hat Satellite and Cloud Connectivity

Satellite subscription enables push-button remediation of issues identified by Insights, with and without Satellite

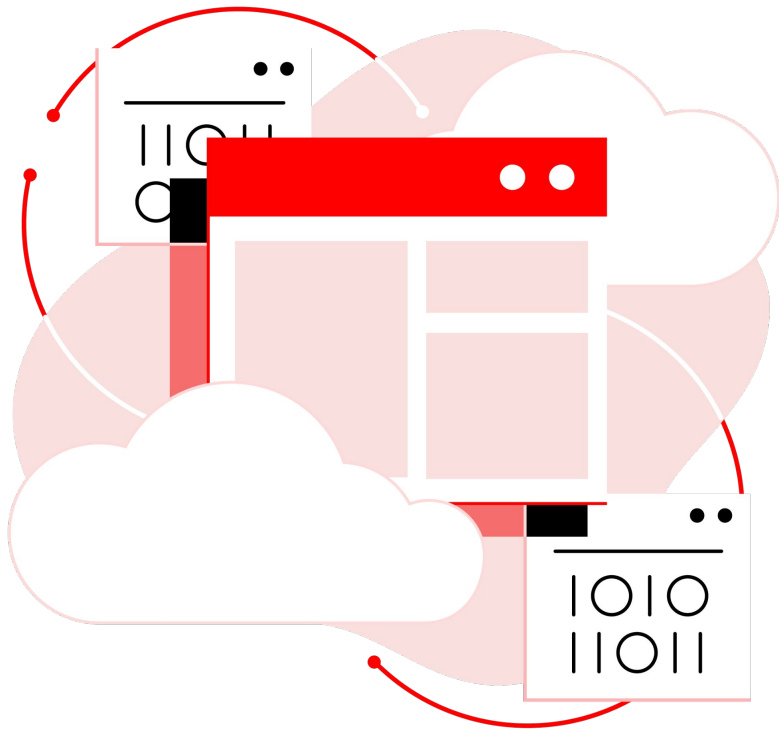


Insights and Satellite

Use Insights to get a centralized view of all hosts in your environment, even across multiple Satellites



Product lifecycle



RHEL Minor Release Changes

There will be no betas for minor releases moving forward.

- ▶ Does not impact **major** release betas
- ▶ Begins with RHEL 9.5 (2024-H2)
- ▶ Get installation media through image builder and packages through Beta channels

Read more:

[Upcoming improvements to Red Hat Enterprise Linux minor release betas](#)

Key life cycle milestones



CentOS Linux 7 End of life

June 30th, 2024



CentOS Stream 8 End of life

May 31st, 2024



Red Hat Enterprise Linux 6 End of ELS support

June 30, 2024



Red Hat Enterprise Linux 7 End of maintenance

June 30, 2024 | Will require ELS add-on



Red Hat Enterprise Linux 8 Start of maintenance

May 31, 2024



Red Hat Enterprise Linux 9 End of full support

May 31, 2027



The Route to RHEL 10

We continue to depend on our open source development model from Fedora to CentOS Stream to RHEL.

Upcoming:

- ▶ CentOS Stream 10
- ▶ RHEL 10 Beta
- ▶ RHEL 10 GA (Expected Mid-2025)

Q&A



Thank you

Red Hat is the world's leading provider of enterprise open source software solutions. Award-winning support, training, and consulting services make Red Hat a trusted adviser to the Fortune 500.



youtube.com/c/RedHatEnterpriseLinux



twitter.com/RHEL



Reddit.com/r/redhat