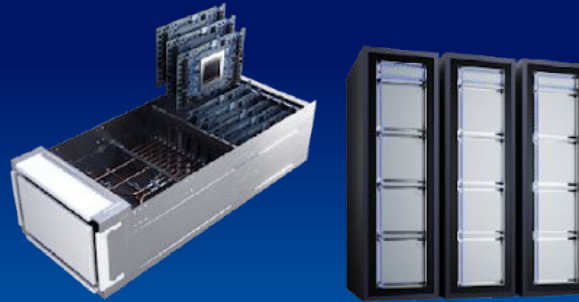


Bringing AI EVERYWHERE



AI PC Node
AI Developer Productivity &
Light Inference

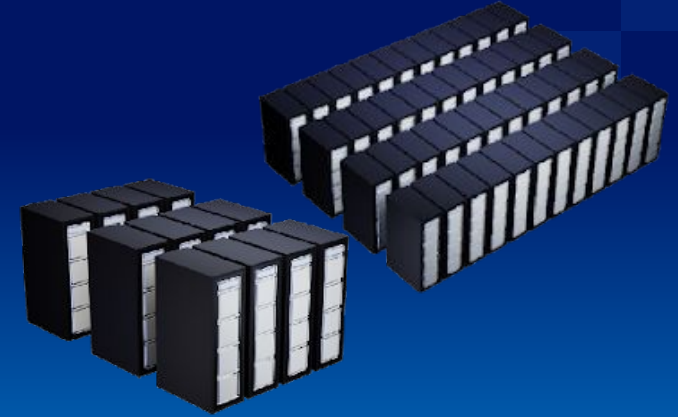
AI PC
Broadest AI SW Ecosystem



Node
Fine-tuning,
Inference

Cluster
Light Training, Tuning,
Peak Inference

ENTERPRISE AI & EDGE AI
Open Standard, "Ready to Use"



Super Cluster
Training, Tuning,
Peak Inference

Mega Cluster
Large Scale Training
& Inference

DATA CENTER AI
AI Open, Scalable Systems & Reference Arch



Intel Enterprise AI for Red Hat® OpenShift® AI and Red Hat® Enterprise Linux

Customer and Ecosystem Managed Software

Intel® Tiber™
Edge Platform

 PyTorch

 OpenVINO™

Intel® Tiber™
AI Studio

 **Red Hat**
OpenShift AI

 **Red Hat**
Ansible Automation
Platform

 **Red Hat**
OpenShift
Container Platform

 **Red Hat**
Enterprise Linux



Intel® Gaudi® 3 AI Accelerator

Giant Leap in Performance
and Productivity for AI Training &
Inference



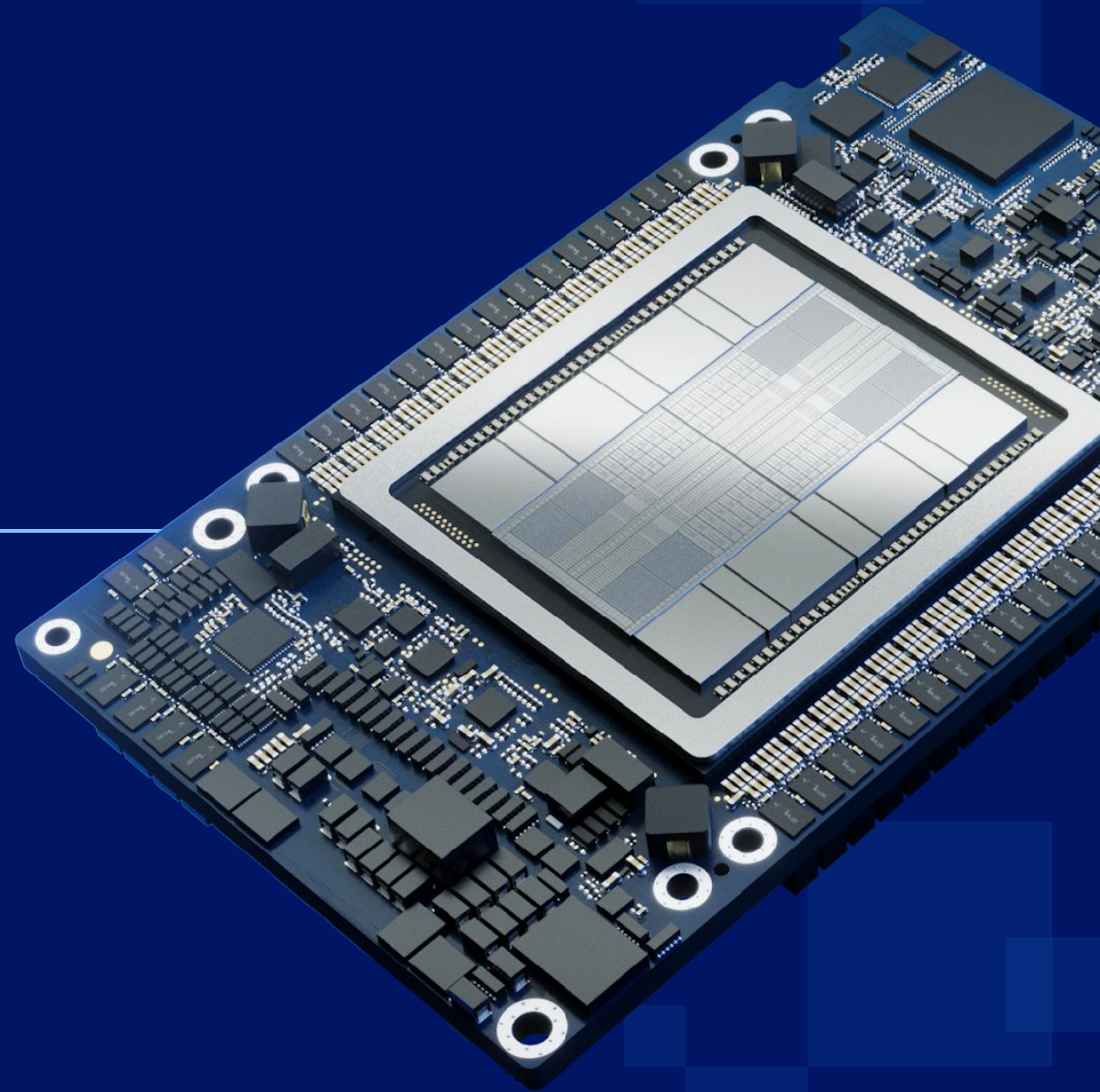
DELLTechnologies

Lenovo

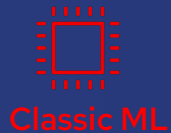


**Hewlett Packard
Enterprise**

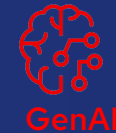
intel®



Practical Case: AI Sweden



Customer and Ecosystem Managed Software



Intel® Tiber™
Edge Platform

PyTorch

OpenVINO™

Intel® Tiber™
AI Studio

 **Red Hat**
OpenShift
Container Platform

 **Red Hat**
OpenShift AI

 **Red Hat**
Enterprise Linux



Intel Xeon® CPU with
built-in AI accelerator



Intel Gaudi 2



Open Ecosystem to accelerate Enterprise GenAI Deployments

RETRIEVAL AUGMENTED GENERATION (RAG)

Enterprise
Data



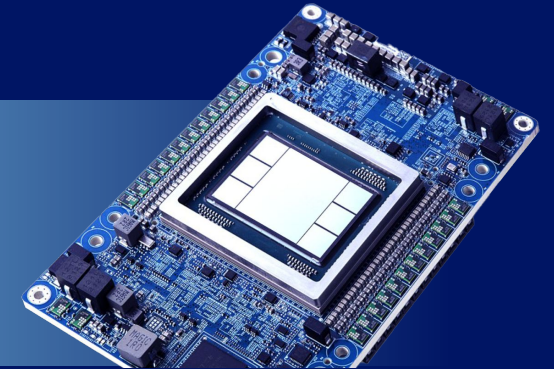
Mature, More Secure and Confidential

x86 CPU Based



Embedding
And
Vectorization

AI
Models



Rapidly Evolving and Disruptive

Accelerator Based

Come try: Access to Intel® Gaudi® 2 & 3* Accelerators at
the Intel @ DCAI LAB in Kista

Come visit: OPEA-based Retrieval Augmented Generation
(RAG) on Intel® Gaudi with OpenShift AI tech session

intel®



Red Hat



Open Platform
for Enterprise AI

Come by: Our booth for an AI Assistant demo



intel®