



**Connect**



# HPE GreenLake Cloud Platform

Experiencia PaaS on-prem

**Alberto Prada**

Presales Consultant

04 Octubre 2022

# AGENDA

**Introduction**

**HPE GreenLake edge-to-cloud Platform**

**Red Hat integration with HPE GreenLake**

**Even better together**


# AGENDA

**Introduction**

**HPE GreenLake edge-to-cloud Platform**

**Red Hat integration with HPE GreenLake**

**Even better together**

The background of the slide is a dark, textured field filled with a dense, chaotic network of fine, glowing green lines and small, bright green dots. These elements radiate from a central point, creating a sense of dynamic energy and complexity, reminiscent of a data visualization or a microscopic view of a material.

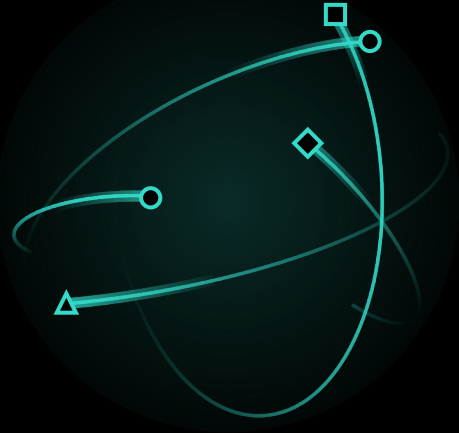
“69% of organizations will execute workloads primarily in flexible as-a-service environments by 2023”

451 Research, part of S&P Global Market Intelligence, Voice of the Enterprise: Cloud, Hosting & Managed Services, Workloads and Key Projects, 2021.

## Modern cloud experience

Cloud first / cloud-only

Speed and agility

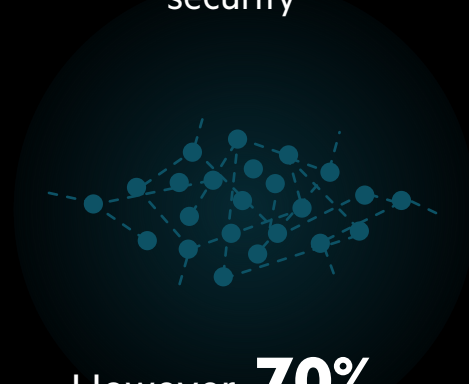


Apps that can easily move to the cloud, **already have**

## On-premises reality

Traditional IT

Data gravity, latency, dependency, compliance, security



However, **70%** of apps and data remain outside the public cloud for good business reasons<sup>1</sup>

## Cloud everywhere

Achieve the cloud experience for all your apps and data — no matter where they live



<sup>1</sup>IDC Cloud Pulse Q1 2020





“By 2022 HPE will be a consumption-driven company, and everything delivered to you will be delivered as a service”

Antonio Neri, CEO, Hewlett Packard Enterprise, Discover 2019



# AGENDA

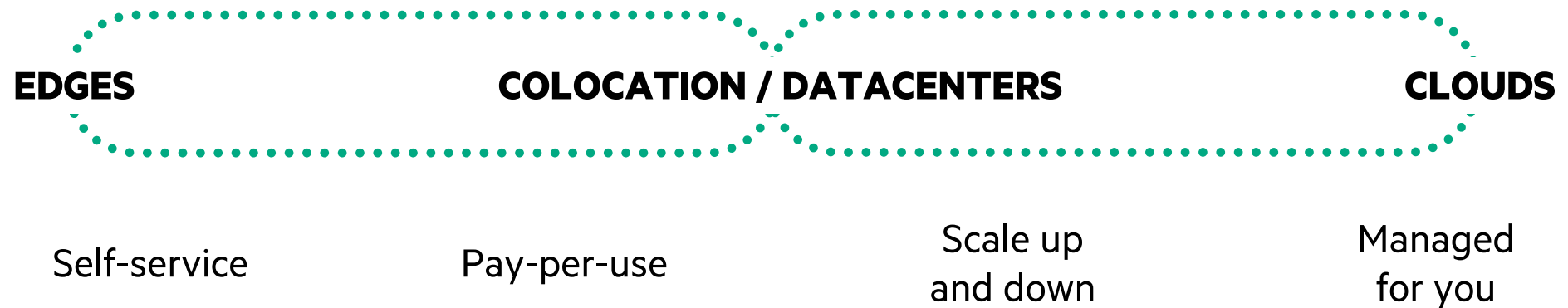
**Introduction**

**HPE GreenLake edge-to-cloud Platform**

**Red Hat integration with HPE GreenLake**

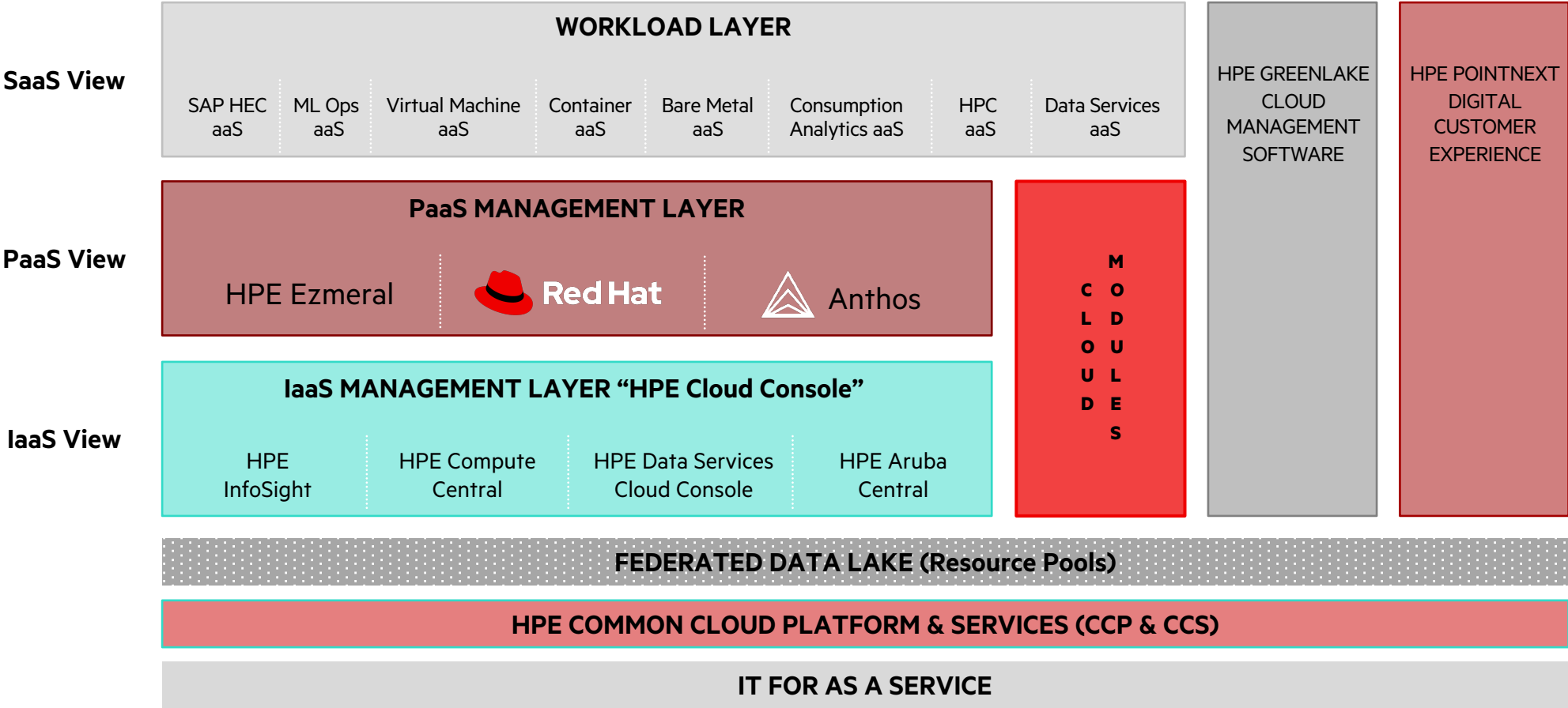
**Even better together**

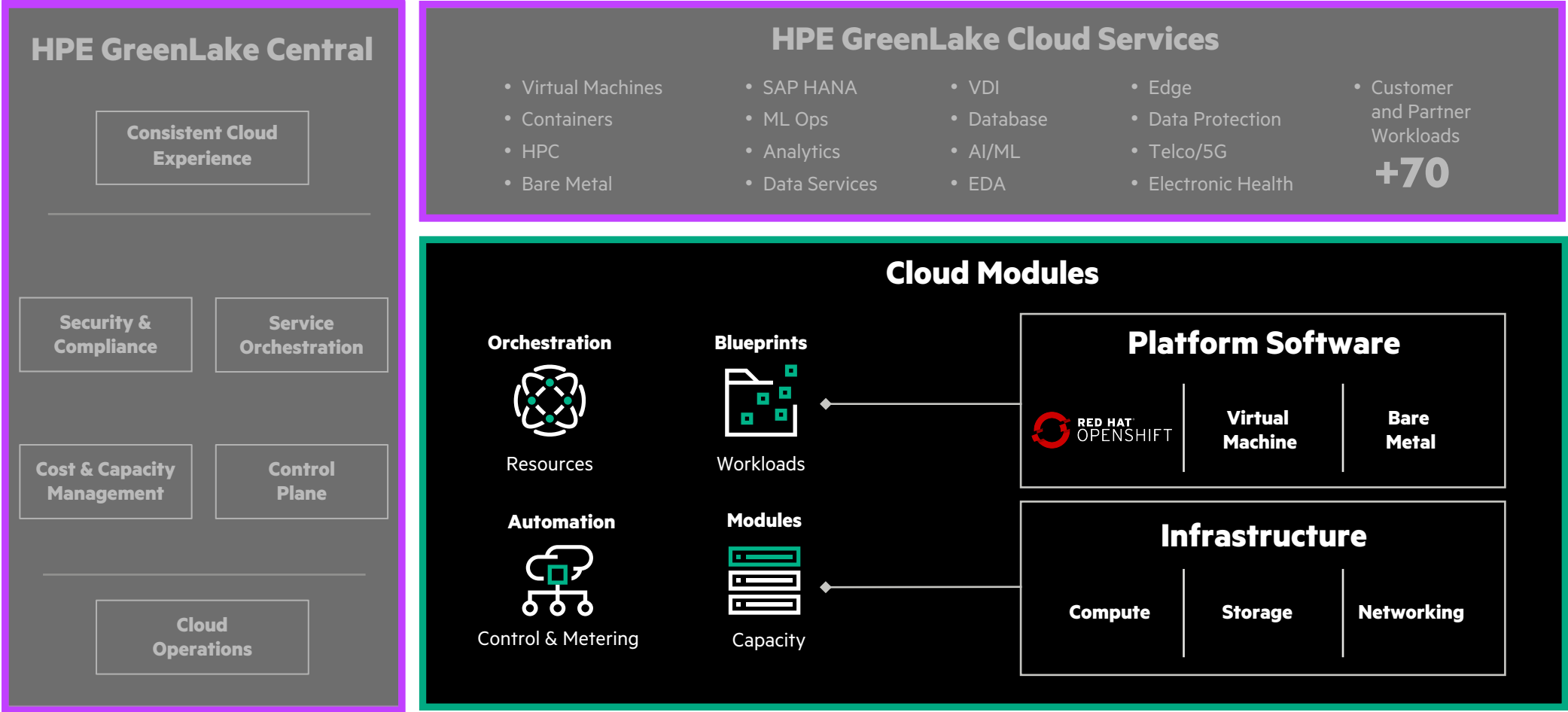
# HPE GREENLAKE EDGE-TO-CLOUD PLATFORM



## THE CLOUD THAT COMES TO YOU





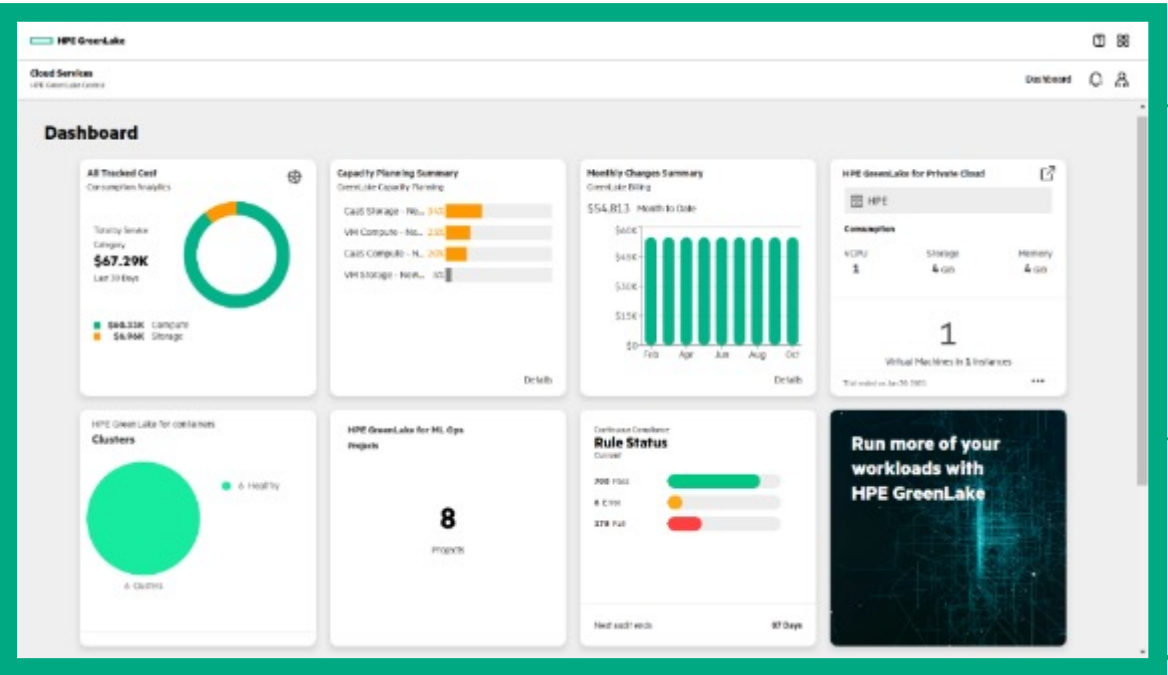




Capacity ready ahead of demand with built-in buffer



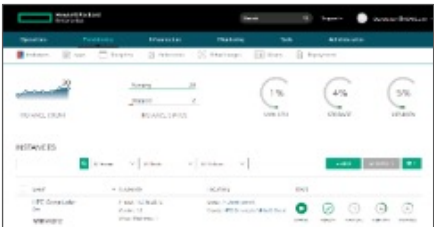
Cost controls to optimize spend across clouds



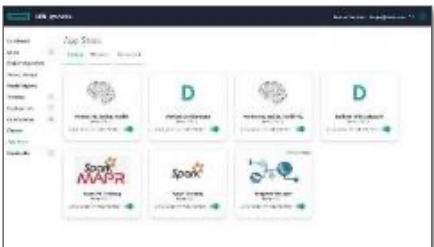
**HPE GreenLake Central**  
Intuitive, self-serve, point-and-click portal and management console



Continuous compliance for over 1,500 controls



Simple and fast for developers to spin up resources



Faster insights for data science teams, with choice of tools

# AGENDA

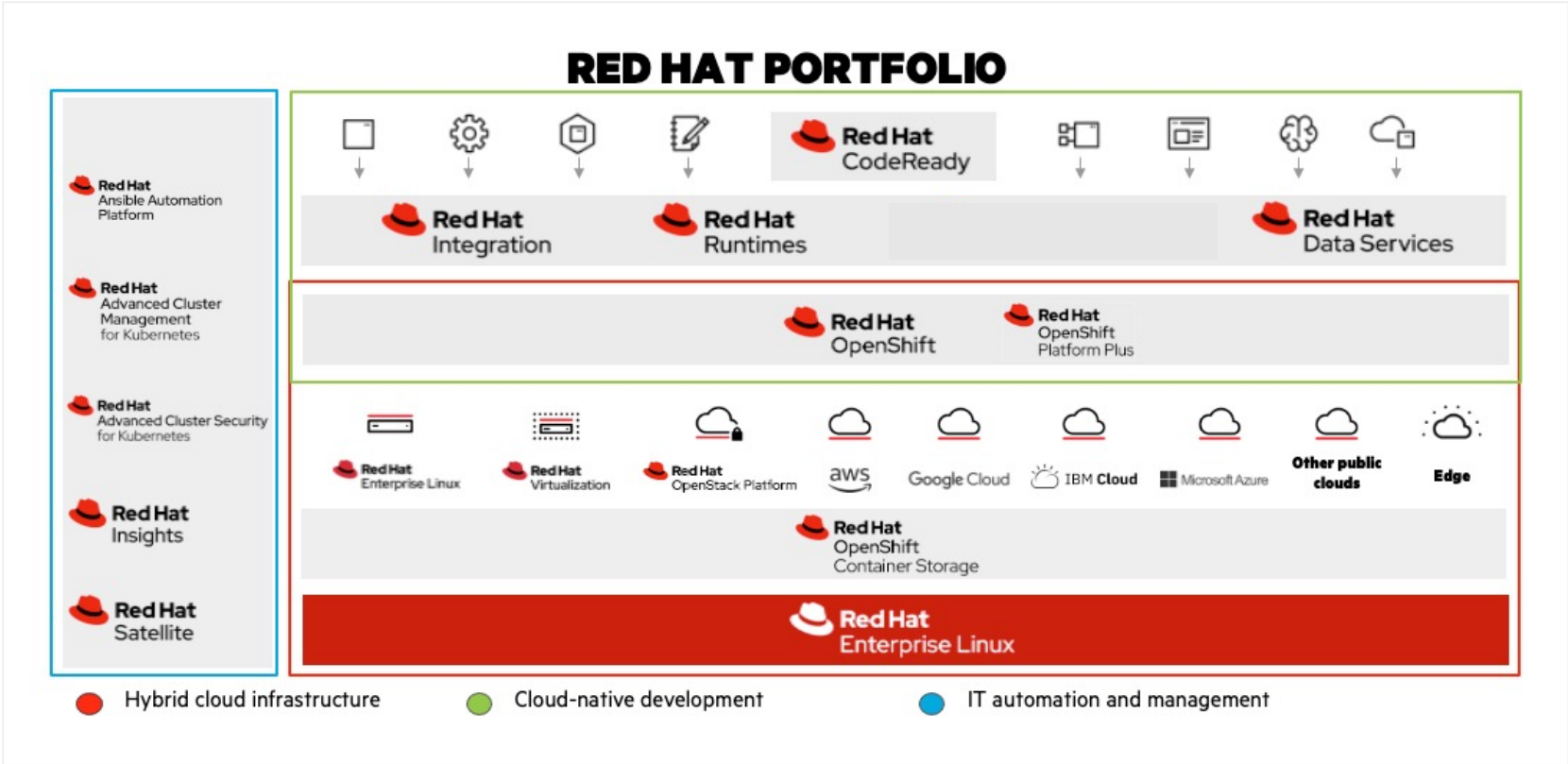
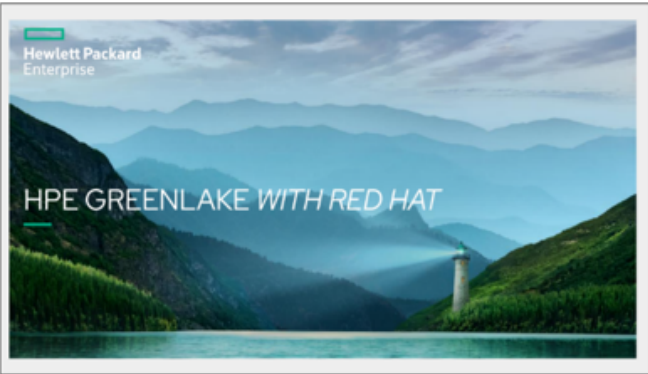
**Introduction**

**HPE GreenLake edge-to-cloud Platform**

**Red Hat integration with HPE GreenLake**

**Even better together**

The **complete Red Hat portfolio** of open-source software solutions as a service via HPE GreenLake



Pay only for what you use



PAY AS YOU GO (PAYG)



The background of the slide is a dark, textured field filled with a dense, chaotic network of fine, glowing green lines and small, bright green dots. These elements radiate from a central point, creating a sense of dynamic energy and complexity, reminiscent of a data visualization or a microscopic view of a complex system.

**“More than 85% of businesses are now using containers.”**

**“45% expect to more than half of their production applications will be containerized by 2023.”**



# STAY TUNED! December 2022



# AGENDA

**Introduction**

**HPE GreenLake edge-to-cloud Platform**

**Red Hat integration with HPE GreenLake**

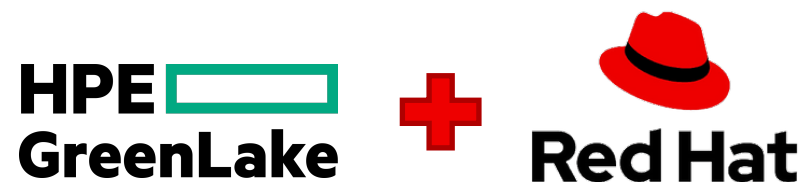
**Even better together**

**“69% of organizations will execute workloads primarily in flexible as-a-service environments by 2023”**



**Trust HPE and  
Red Hat to help  
you navigate the  
transformation  
process.**

**HPE GreenLake and Red Hat**





**Connect**

**HPE**   
**GreenLake**

# Thank you



[linkedin.com/company/red-hat](https://linkedin.com/company/red-hat)



[facebook.com/redhatinc](https://facebook.com/redhatinc)



[youtube.com/user/RedHatVideos](https://youtube.com/user/RedHatVideos)



[twitter.com/RedHat](https://twitter.com/RedHat)

**Alberto Prada**  
Presales Consultant  
[alberto.prada@hpe.com](mailto:alberto.prada@hpe.com)