



**Connect**

# Atos Edge AI & IoT

30 Nov. 2022

Emanuele Paracone  
Cloud Consultant – Cloud Enterprise Solutions – Italy



# Atos at Glance



## Global leader

- Secure and decarbonized digital
- Cloud and managed security services worldwide
- IoT Services & Solutions
- Identity governance and administration

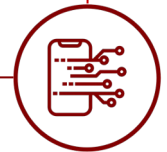
## Pioneer in

- **Edge server** technology
- Quantum technology with the Atos Quantum Learning

Best-in-class computing power

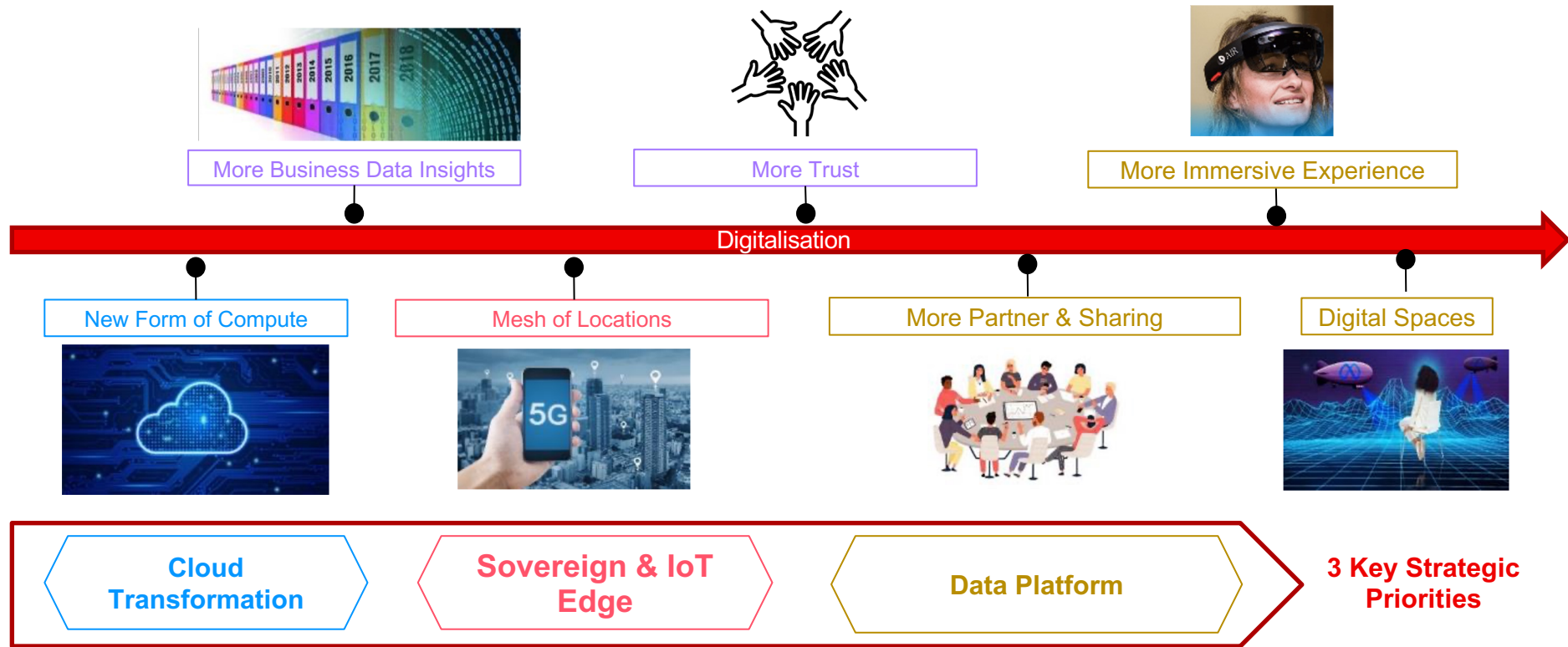
Supported by the talent and diversity of 107,000 employees in 71 countries we generate an annual revenue of €11 billion.

We offer our clients a range of market-leading digital solutions and products alongside consultancy services digital security and decarbonization offerings.



# Atos Strategic Technology Vision aligned with Red Hat Strategy

## Clients' path to Digital Transformation



# IoT Offerings for every industry

Transforming data into business outcomes



## IoT4RS

- **Remote inspection**
- Smart Grid
- Smart Metering
- Water waste management
- Connected Vessels
- **Autonomous stores**
- Intelligent Supply Chain



## IoT4PSD

- **Video Surveillance**
- **Incident detection**
- **Crowd Control**
- Smart Mobility solutions
- **Smart building**
- Smart Parking
- Connected Soldier



## IoT4HLS

- Digital Process Twin Pharma
- **Temperature monitoring & Compliance**
- Virtual care & monitoring
- **Digital Hospital**



## IoT4MAN

- **Predictive maintenance aaS**
- Smart Control Room
- **Connected Vehicles**
- Digital Shopfloor
- Remote Expert Support



## IoT4TMT

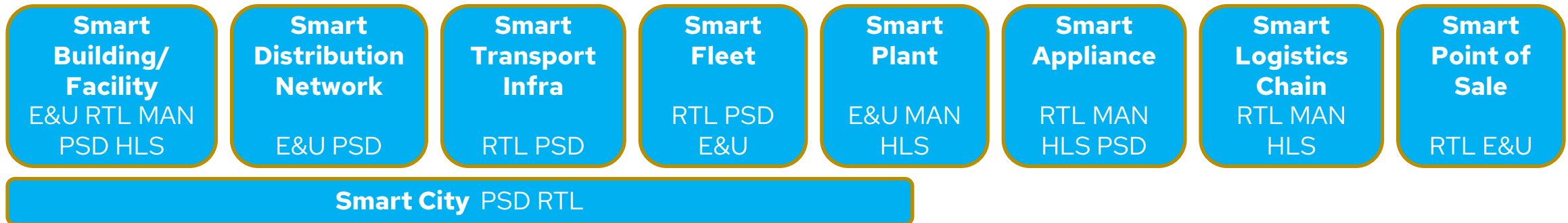
- Remote Production
- Predictive Maintenance Entertainment infra
- **5G/Edge/MEC**
- Data Intelligence
- **Digital Twin Networks**



## IoT4FS

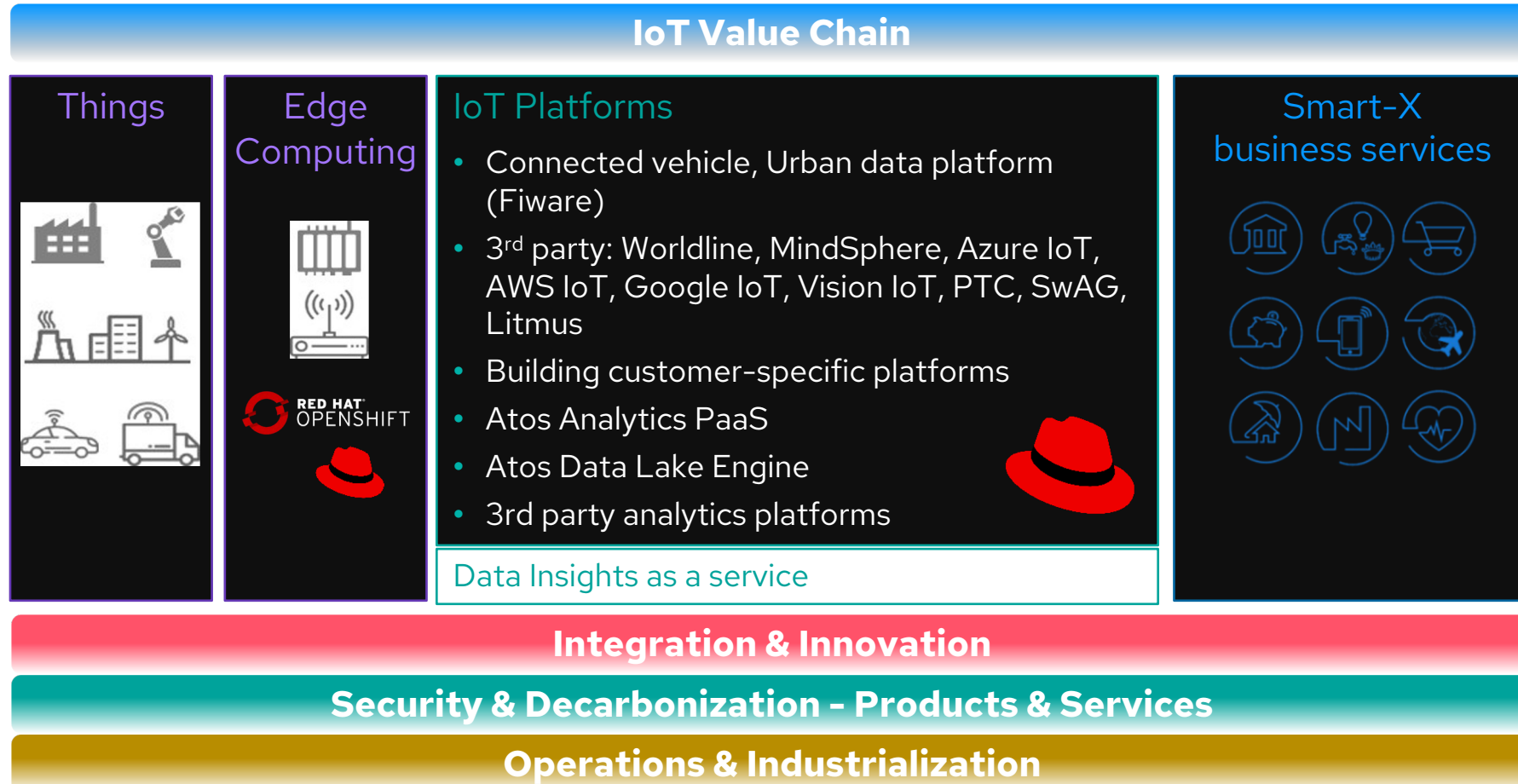
- Pay how you drive
- Smart Performance Finance
- Fraud prevention
- Smart Branch banking
- Customer Loyalty services Networks

Go-to-Market: Use Cases bundled into Smart X Themes



# IoT is the key enabler for Digital Journey for Customers

We cover the end-to-end Value Chain for our customers' IoT Use Cases



# AI and IoT analytics at the Edge

Atos is delivering end to end solutions – focused on outcome as a service



Smart Cities  
Video Protection,  
Violence detection,  
Traffic management



Factories  
Quality Inspection,  
Physical Security, Access  
Control, Predictive  
maintenance



Energy & Telco  
Augmented  
Technician,  
Perimeter  
Inspection



Retail  
Shelf Monitoring,  
Retail analytics



Healthcare  
Patient  
Monitoring



Transport  
Intelligent train  
station



Smart venues  
Contactless access  
control  
Crowd management

Services

**Atos** Strategy, Consulting, Integration, ML-Ops, Data Science, Managed Edge ...

Software

**Atos** VISuite  
(from Atos Computer Vision Platform)



Partner  
solutions



Platforms

**Atos** Atos Computer Vision Platform Predictive analytic  
solutions (Zdata, BDSS, Codex Smart Edge)

Ecosystems



Edge and Fog  
Hardware

**Atos**



Technology  
Partners



# Atos and Red Hat for Edge Computing

Average 30% Growth per year: Atos Contract value > €400M



## Innovative Edge Infrastructure

A swarm of  $\mu$ Edge streaming data captured from any device to powerful Edge servers for analytics inference designed to run anywhere



## Extensive 5G Capabilities

Private bubbles from a few meters to kilometers, with network slicing to service multiple core functionalities on an effective and scalable environment



## Outcome-as-a-Service

Business outcomes are driving our efforts, from initial engagement, technology to consumption model, it only matters if the customer wins



## Flexible Cloud Enabled Edge Platform

From Edge to Cloud, we build reusable components on seamless scalable cloud-based architecture



## Codeless Secure Data Pipelines

Modern data pipelines are like a copy-paste, from anything to cloud. No need for hundreds of lines of code.



## Cloud Native Build

Using containers from  $\mu$ Edge to Cloud allows a great flexibility and synergy between all components along the data chain



## DevSecOps

Planning, designing and building modern secure CI/CD pipelines for app dev environments with regulatory support

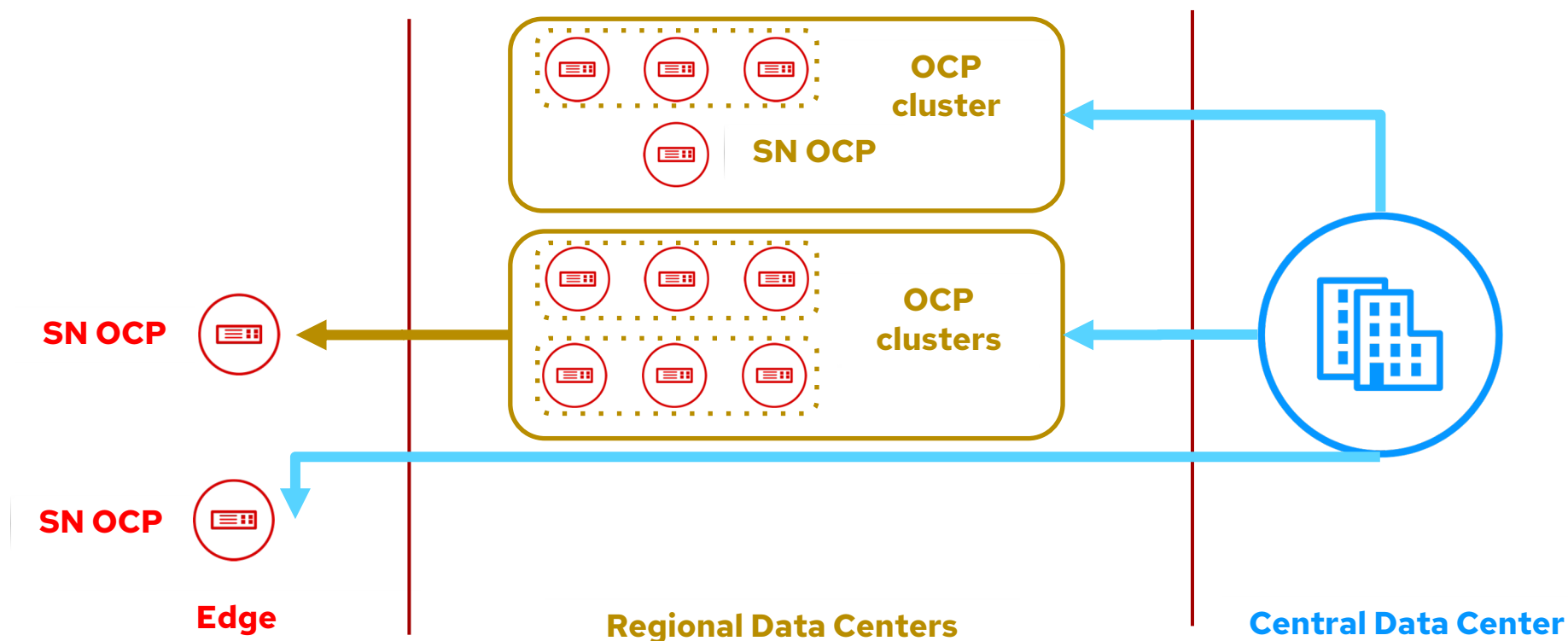


## Managed Services

World's most comprehensive catalog of services based on Kubernetes to support build and management of modern applications

# Single Node OpenShift

Platform consistency between datacenters and edge





## AMOS Value Added Features

### Container Image Handling

static analysis of vulnerabilities  
advanced container registry  
image signing

### Application Migration Tooling

Atos Cloud Assessment (ACAT)  
Remediation Tools (CCAT)  
Migration from OCP 3.x to 4.x

### External Log-aggregation

OpenShift generated artifacts can be stored on external Aggregator

### Self Service Portal

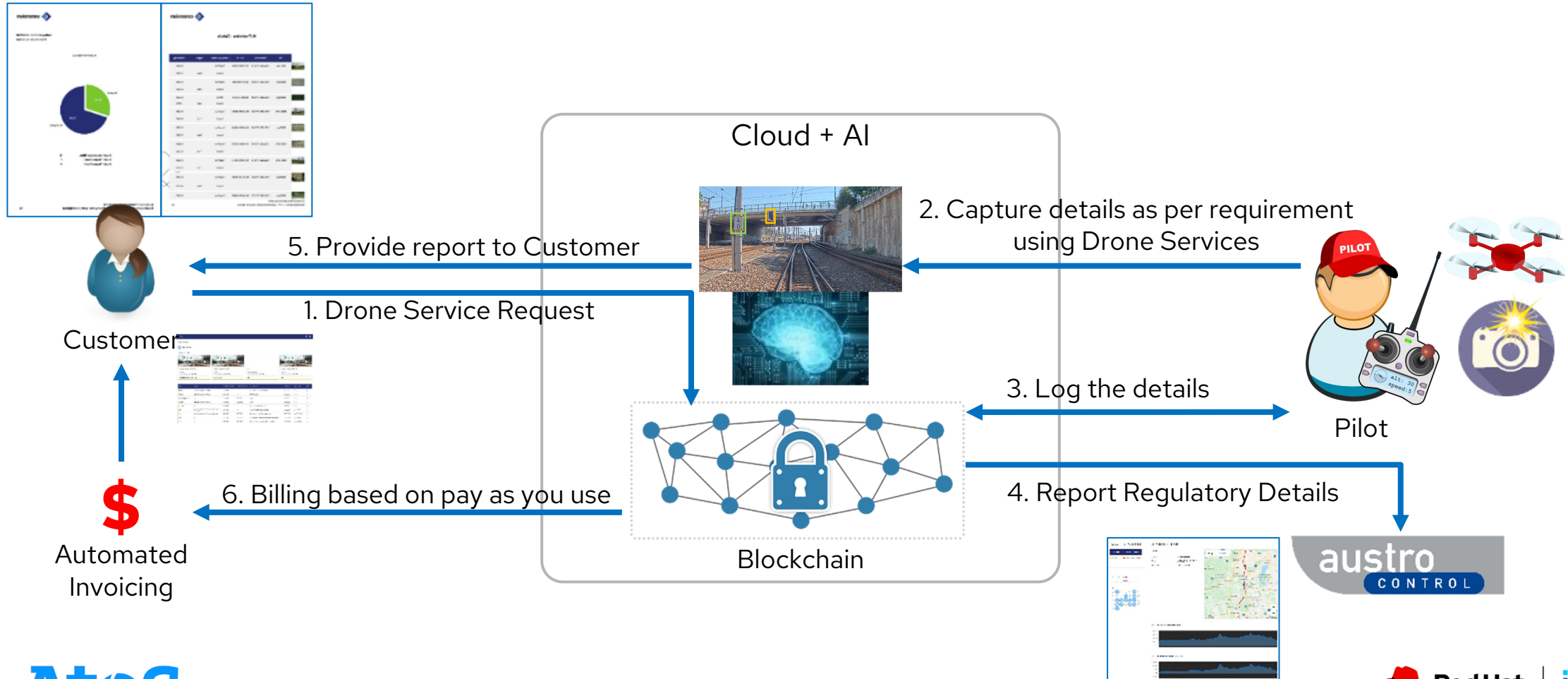
Available for Project and User management

### Customer Identity

Management integration  
Integrate the existing customer's directories with SSO

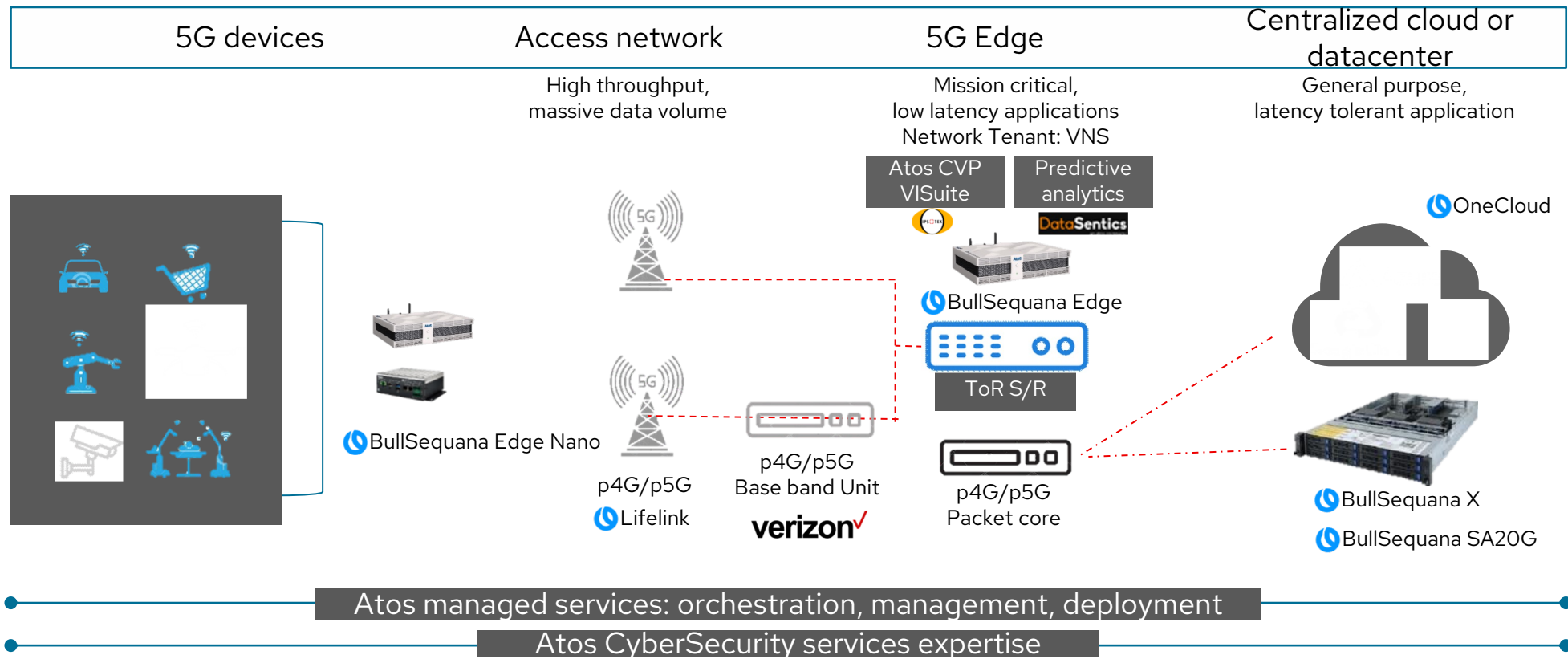
# The Atos UAV Solution – ARCA ingeniosa

A Scalable End 2 End Automated Service Delivery Platform



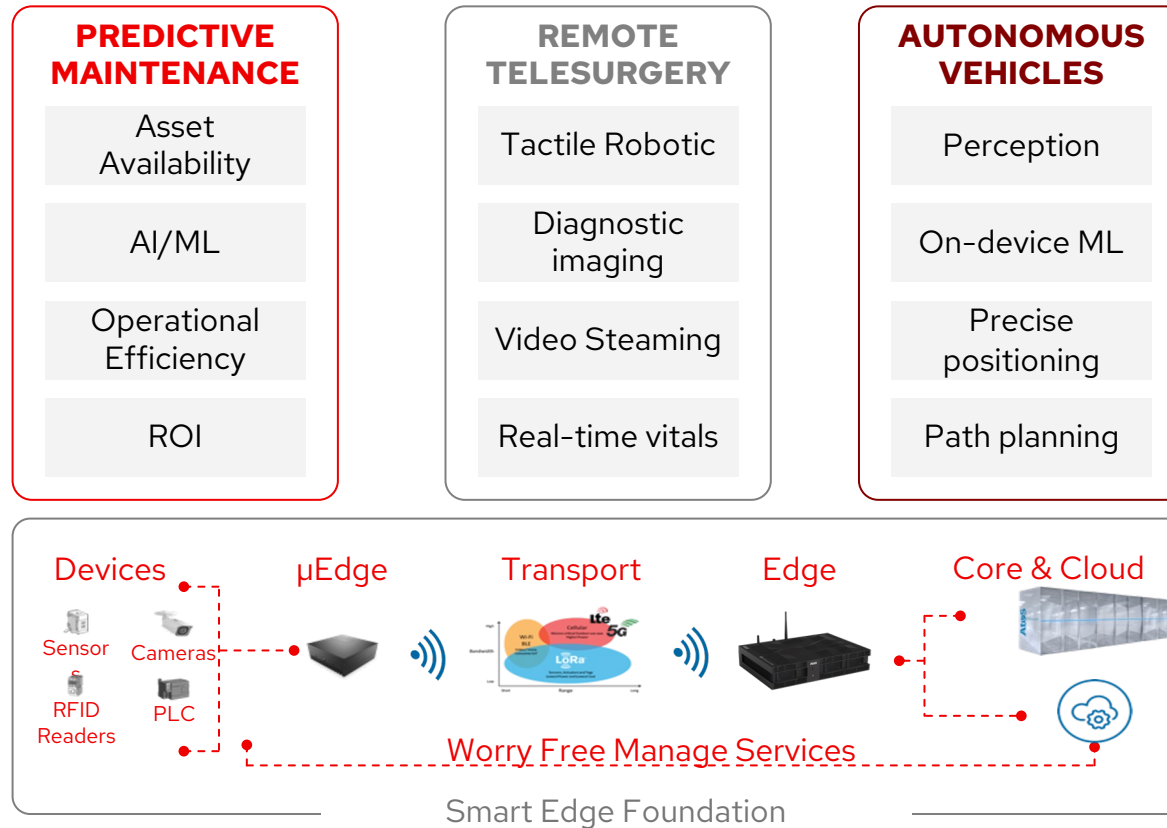
# Atos 5G Private MEC architecture

All-in-one easy to deploy architecture



# Smart Edge Services enabled by Atos and Red Hat

Focus on new value chains



## Consulting

Product ownership, agility discipline, change management

## Data Engineering

Architecture, ETL, analytics

## Data Science

Feature extraction, model development

## IaaS/PaaS

Core infrastructure, DevSecOps, CI/CD

## Experience Design and Delivery

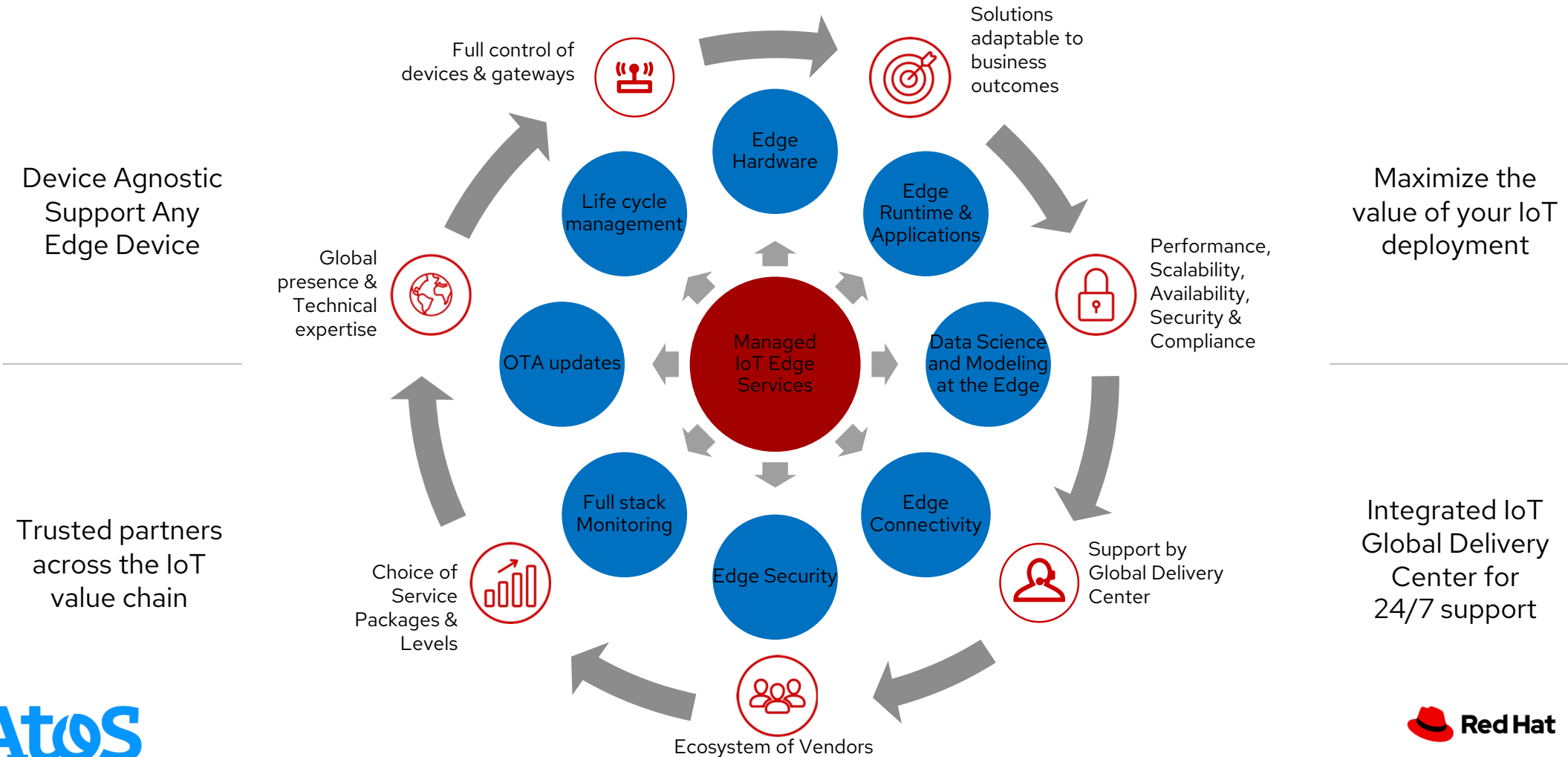
Journey mapping, visual design, app dev

## Managed Services

Hybrid (on-prem and cloud) management model

# Managed IoT Edge Services with Red Hat

## Holistic and Vendor-agnostic services



# Atos IoT Capabilities at a glance



Atos addresses **customer challenges** with **end-to-end IoT capabilities**



Atos invested **pre-integrated Ready-to-go IoT solutions** with high profile brand-name customers



Atos delivers **IoT@Scale** and offers innovative right-of-use and **outcome based commercial models**



Atos has implemented **more than 100 IoT use cases**, enabling **business outcomes** in all our Industries



Unique expertise on **carbon footprint management** and **decarbonization actions**

Red Hat  
**Summit**

**Connect**

# Thank you



[linkedin.com/company/atos](https://www.linkedin.com/company/atos)



[facebook.com/Atos](https://www.facebook.com/Atos)



[twitter.com/atos](https://twitter.com/atos)

**Atos**