

#ANSIBLEAUTOMATES

# ANSIBLE TOWER USE CASES AND DEMO

Rinaldo Bergamini  
Senior Solution Architect



ANSIBLE

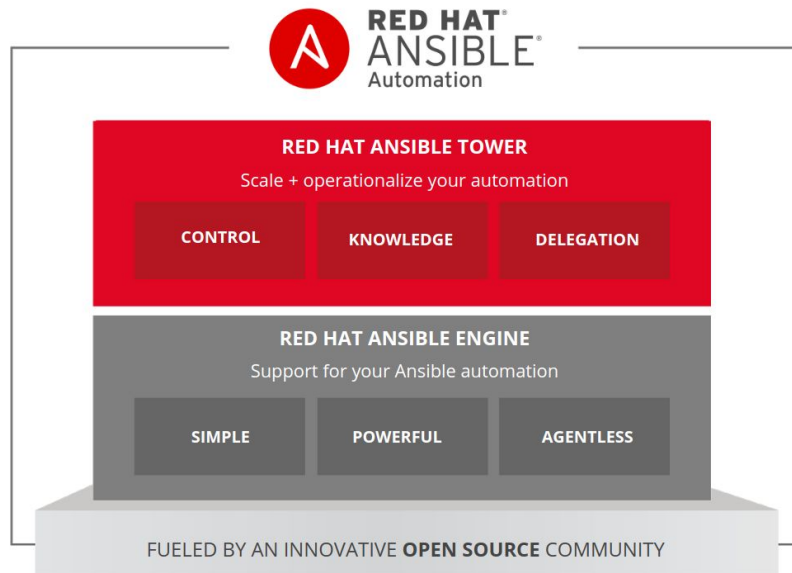
# WHAT IS ANSIBLE AUTOMATION ?

ANSIBLE

The Ansible project is an open source community sponsored by Red Hat. It's also a **simple automation language** that perfectly describes IT application environments in **Ansible Playbooks**.

**Ansible Engine** is a **supported product** built from the Ansible community project.

**Ansible Tower** is an **enterprise framework** for controlling, securing, managing and extending your Ansible automation.





## CROSS PLATFORM

Agentless support for all major OS variants, physical, virtual, cloud and network devices.

## HUMAN READABLE

Perfectly describe and document every aspect of your application environment.

## PERFECT DESCRIPTION OF APPLICATION

Every change can be made by Playbooks, ensuring everyone is on the same page.

## VERSION CONTROLLED

Playbooks are plain-text. Treat them like code in your existing version control.

## DYNAMIC INVENTORIES

Capture all the servers 100% of the time, regardless of infrastructure, location, etc.

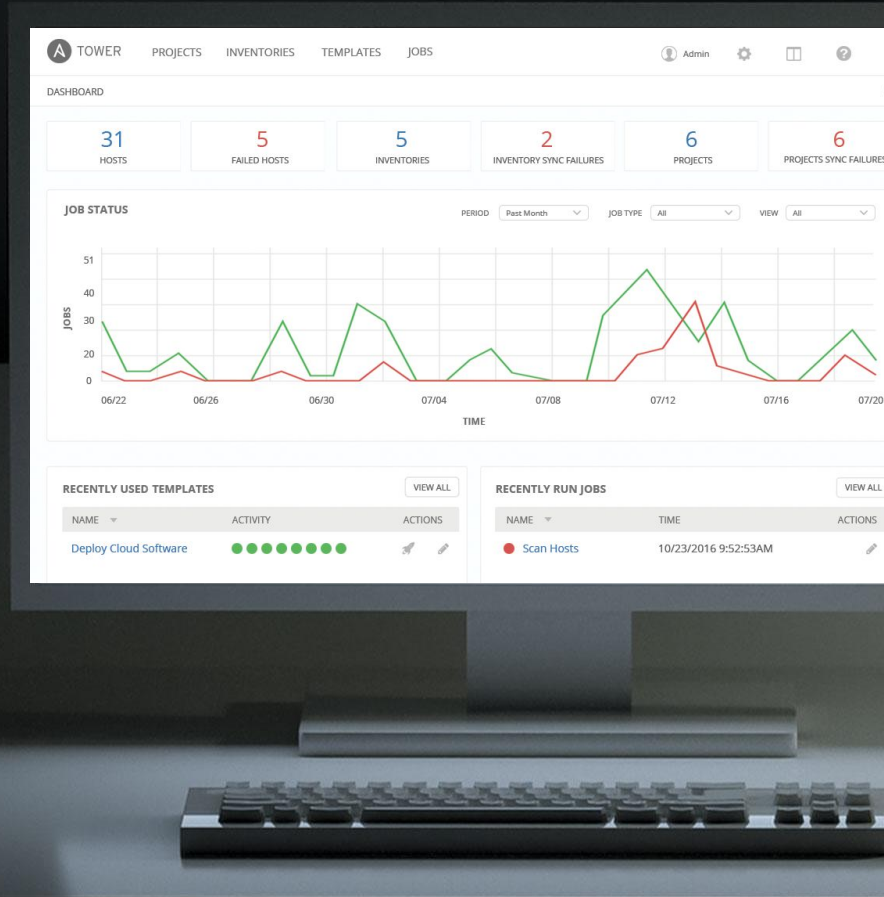
## IDEMPOTENCY

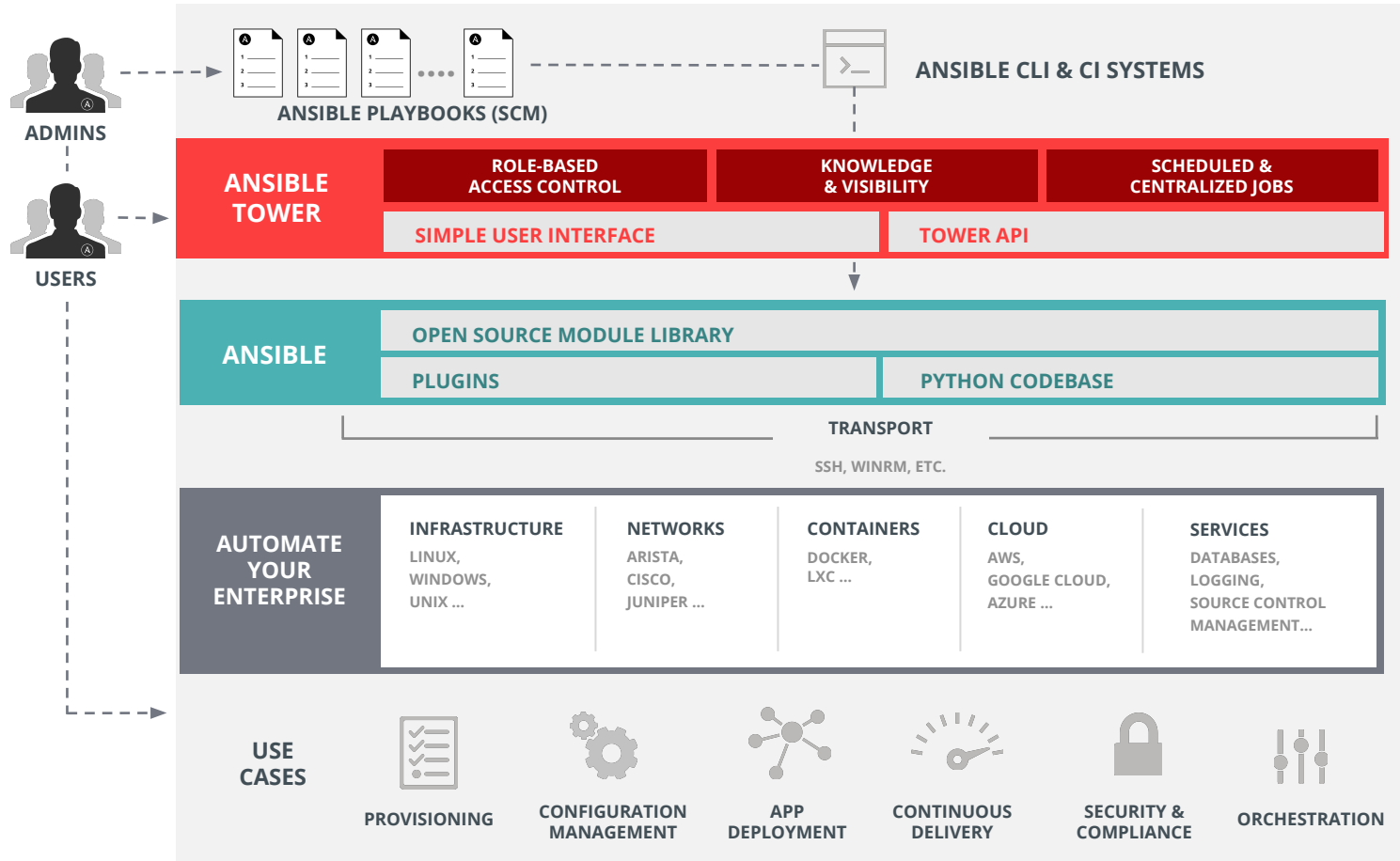
Performing actions once is exactly the same as the result of performing them repeatedly.

# WHAT IS ANSIBLE TOWER?

Ansible Tower is an **enterprise framework** for controlling, securing and managing your Ansible automation – with a **UI and RESTful API**.

- **Role-based access control**
- **Deploy** entire applications with **push-button deployment** or **API** access
- All automations are **centrally logged**
- Very useful to **test** and develop playbooks
- Inventories and Git **integration**





# ANSIBLE USE CASES

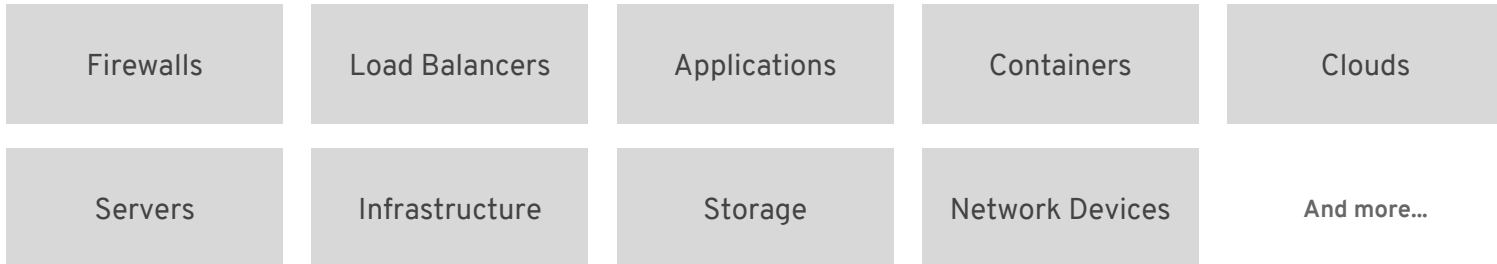
ANSIBLE

Automate the deployment and management of your entire IT footprint.

Do this...



On these...

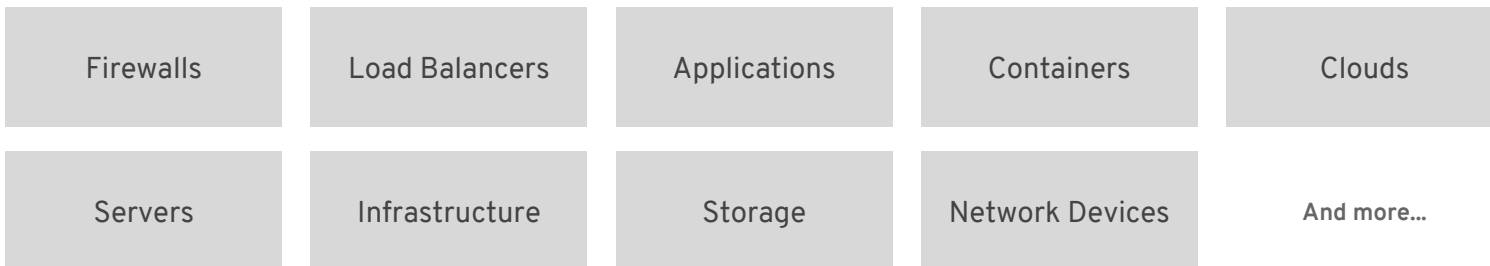


Automate the deployment and management of your entire IT footprint.

Do this...



On these...



# OS COMPLIANCE DEMO



<https://youtu.be/jwWlq7XgZUw>

## DEFINE SPECIFIC RULES FOR A LAMP STACK AND ENFORCE THEM

- A specific NTP **configuration** is defined
  - NTP **service** is started
  - Configure **SELinux** to allow httpd to connect to db
  - Configure **SELinux** to allow db connections
  - Open **firewall** port for httpd
  - Open **firewall** port for db
  - httpd **service** is started
  - mysql **service** is started
- ... and more



[https://youtu.be/qWMb4a\\_m7u4](https://youtu.be/qWMb4a_m7u4)

## BENEFITS

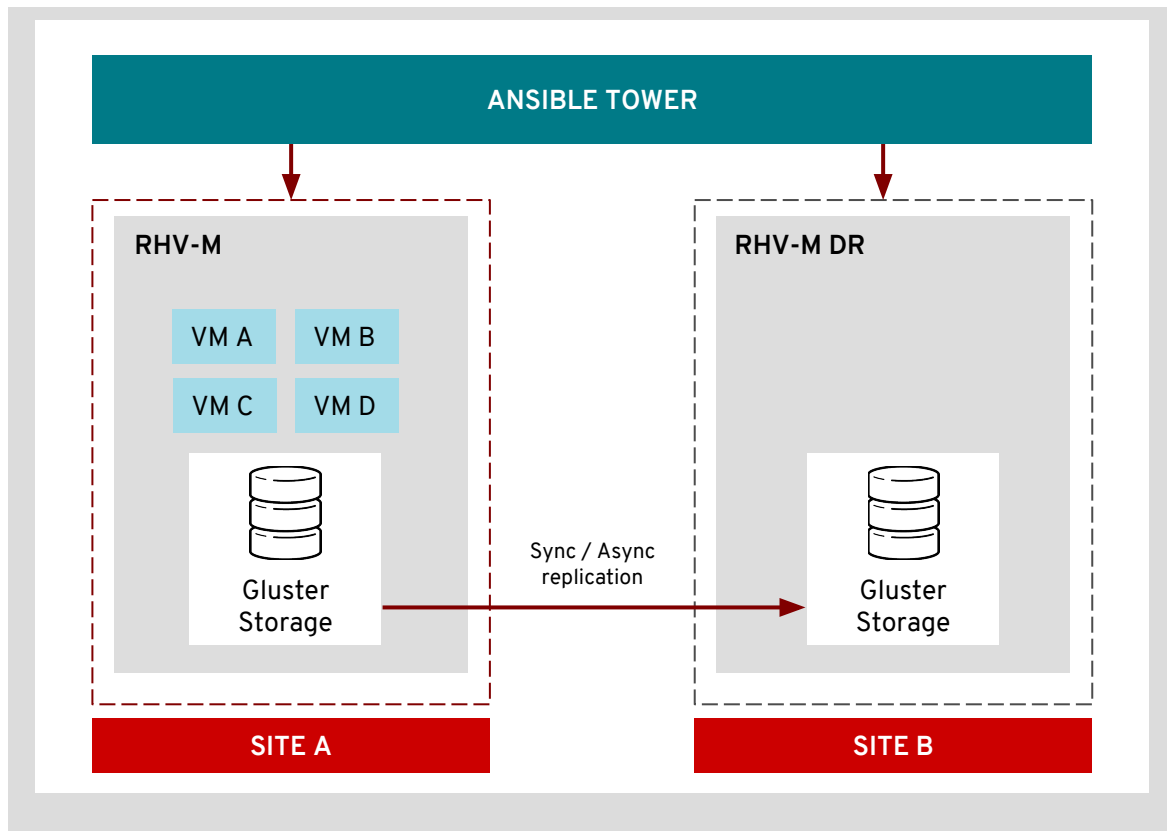
- LESS **HUMAN ERROR**
- **FIX** JUST WHAT'S NEEDED (IDEMPOTENCY)
- AVOID **RISK** AND TAMPERING
- CENTRALIZED **REPORTING**
- ENABLES MASSIVE **AUDITS**



# DISASTER RECOVERY AUTOMATION DEMO

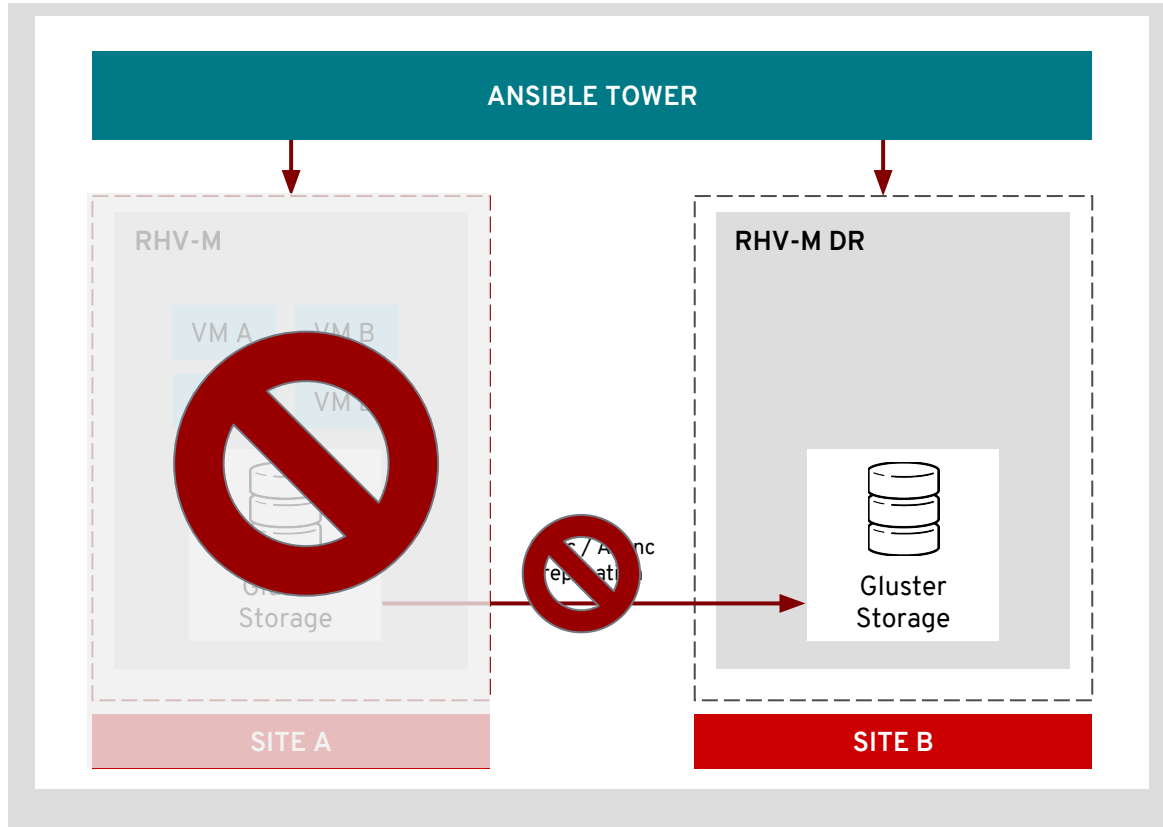
# DISASTER RECOVERY AUTOMATION

ANSIBLE



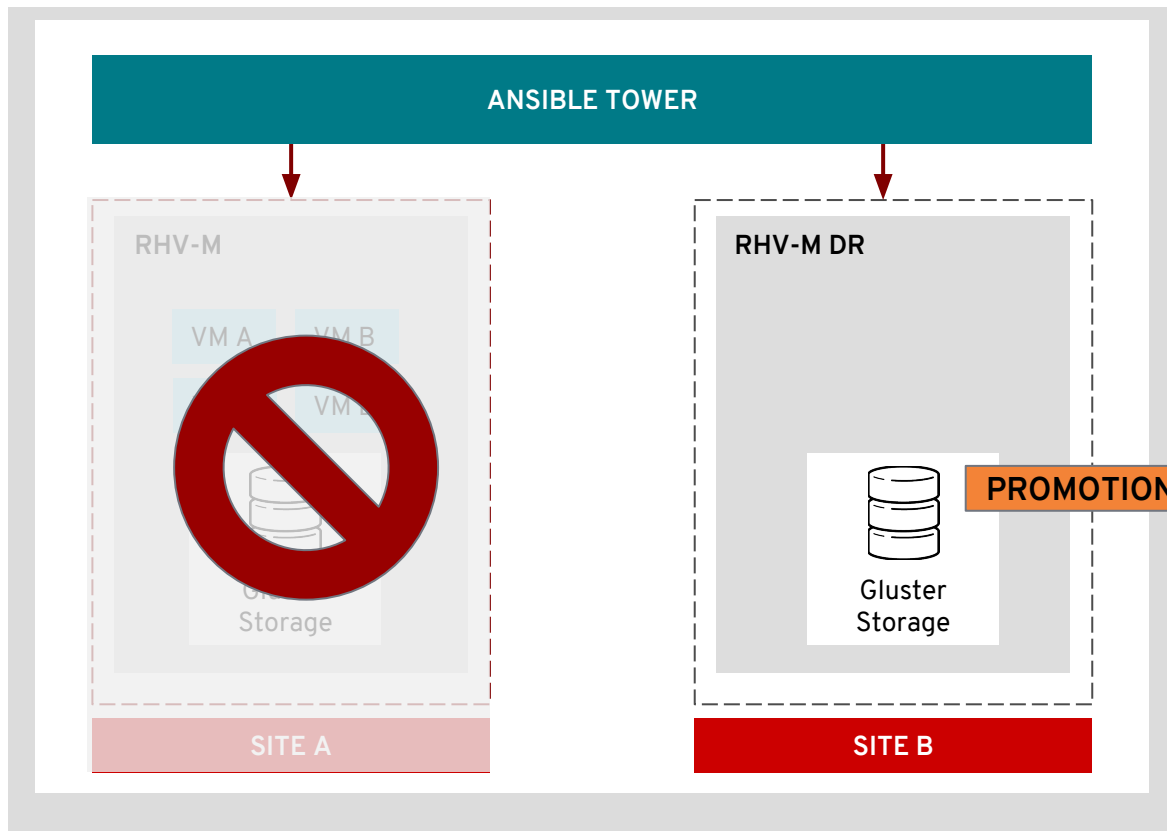
# DISASTER RECOVERY AUTOMATION

ANSIBLE



# DISASTER RECOVERY AUTOMATION

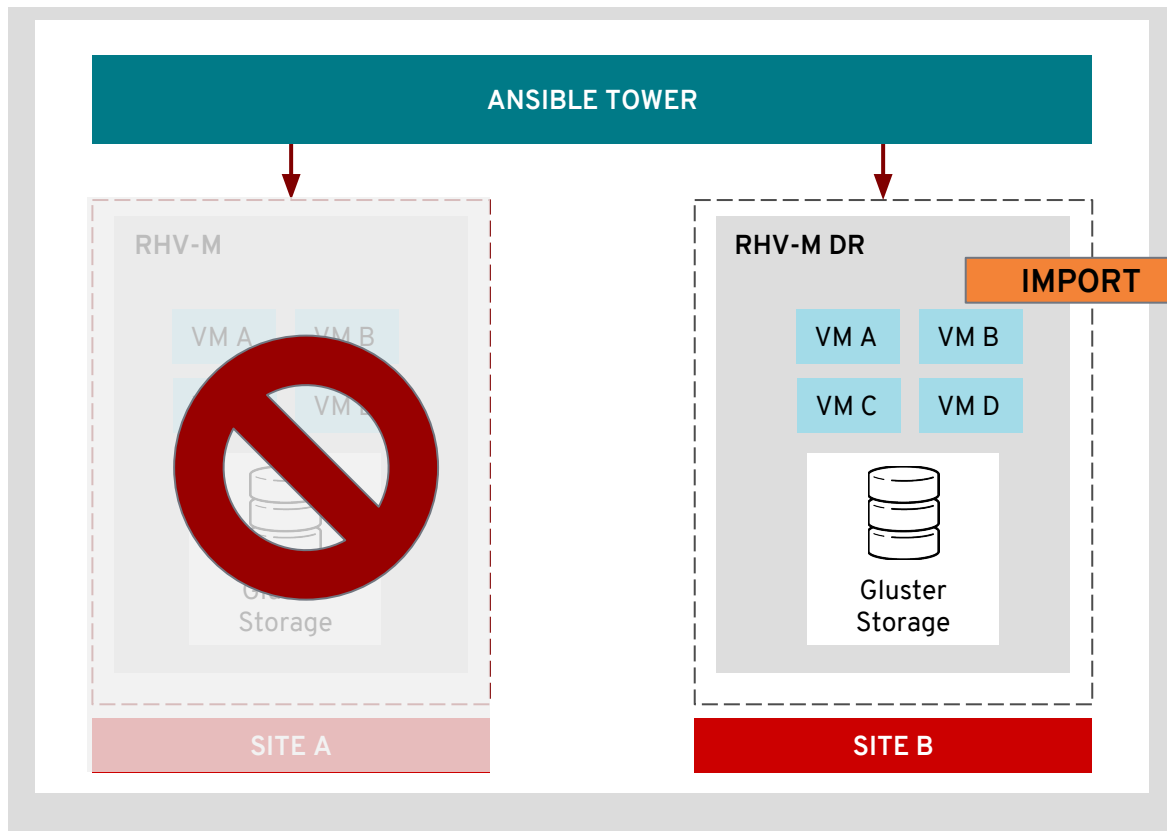
ANSIBLE





# DISASTER RECOVERY AUTOMATION

ANSIBLE

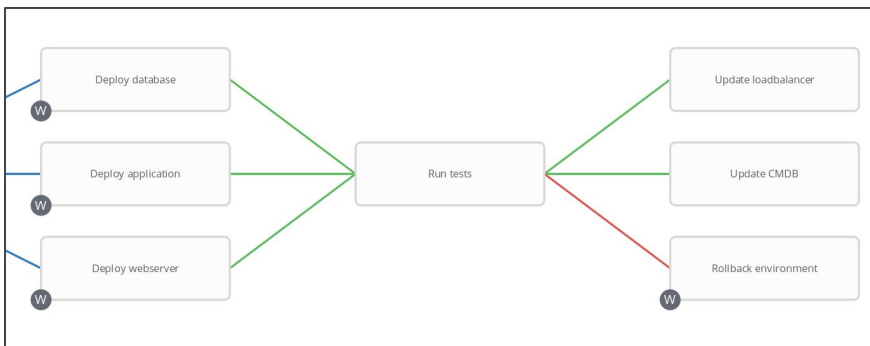


<https://youtu.be/FdAHkcXmkpQ>

## BENEFITS

- **FASTER** RECOVERY TIMES
- LESS **DOWNTIME**
- BETTER **SLAs**
- REDUCE **RISK** - PUSH BUTTON
- **MODULARITY** ENABLES TEAMS **INTEROPERATION**
- **INTEGRATION** WITH **3RD PARTY** INFRASTRUCTURE SOLUTIONS
- REDUCE **LOCK-IN**

- **WORKFLOW-LEVEL INVENTORY**
- **ENHANCED & NESTED WORKFLOWS**
- **WORKFLOW CONVERGENCE**



PROMPT

INVENTORY SURVEY PREVIEW

SELECTED Prod REVERT

**⚠ This inventory is applied to all job template nodes that prompt for an inventory.**

SEARCH Q KEY

NAME ^

Dev

**Prod**

Test

ITEMS 1 - 3

CANCEL NEXT

ANSIBLE



# AUTOMATION EVERYWHERE



ANSIBLE