



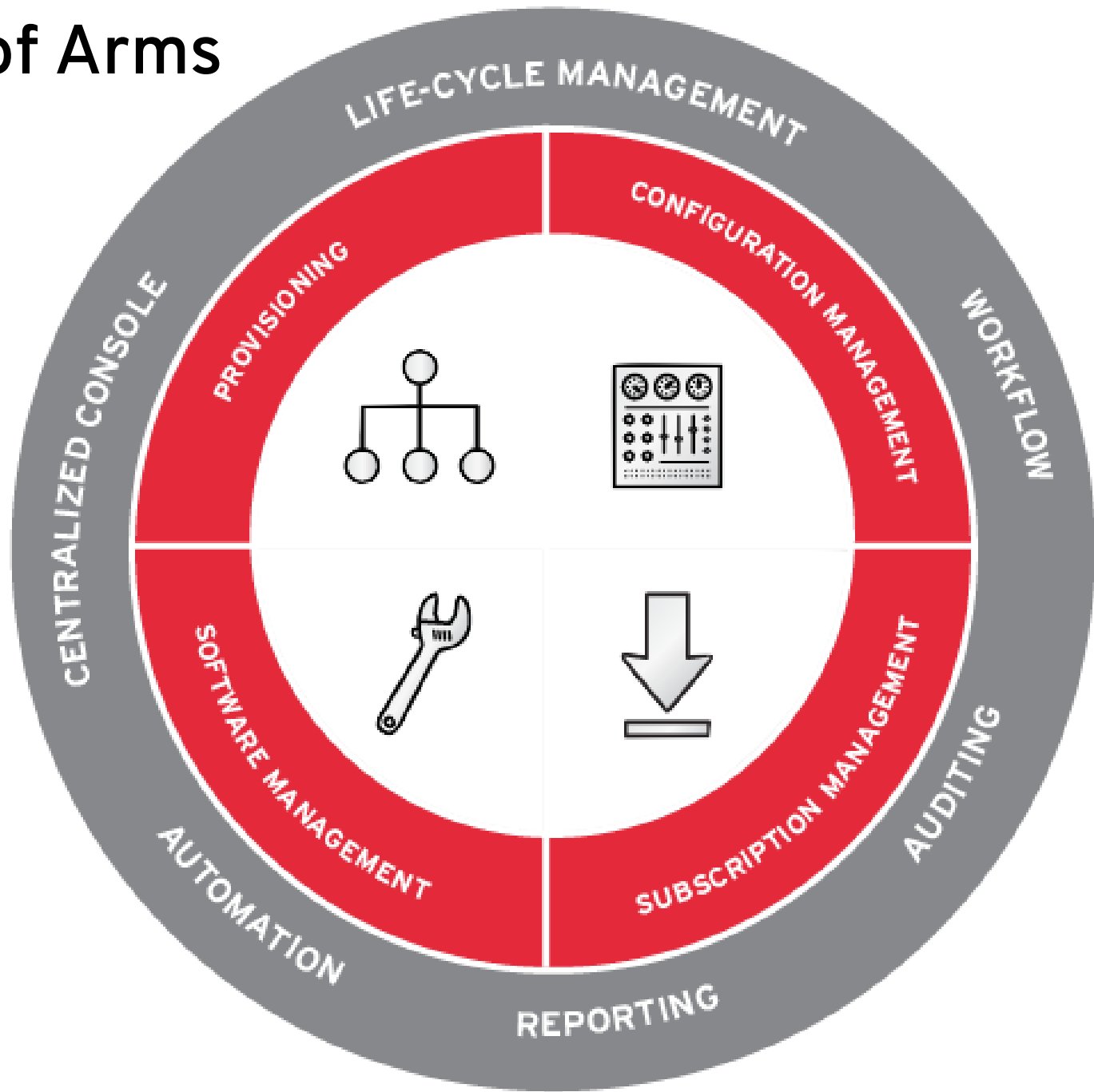
RED HAT
FORUM
Europe, Middle East & Africa



The Next Generation Platform Management Solution with Satellite 6.1

Ohad Levy
Engineering manager, redhat

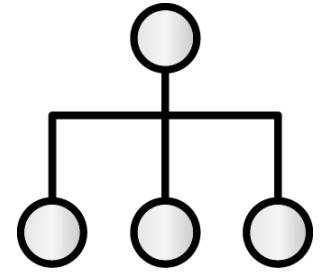
Satellite 6 Coat of Arms



Satellite 6



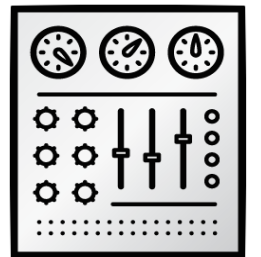
Automate Provisioning using PXE, Images, & containers, discover bare-metal servers & auto-provision with policies



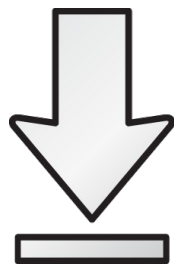
Blend RPMs, Puppet Modules, & Containers in a single versioned construct, and promote thru life cycles



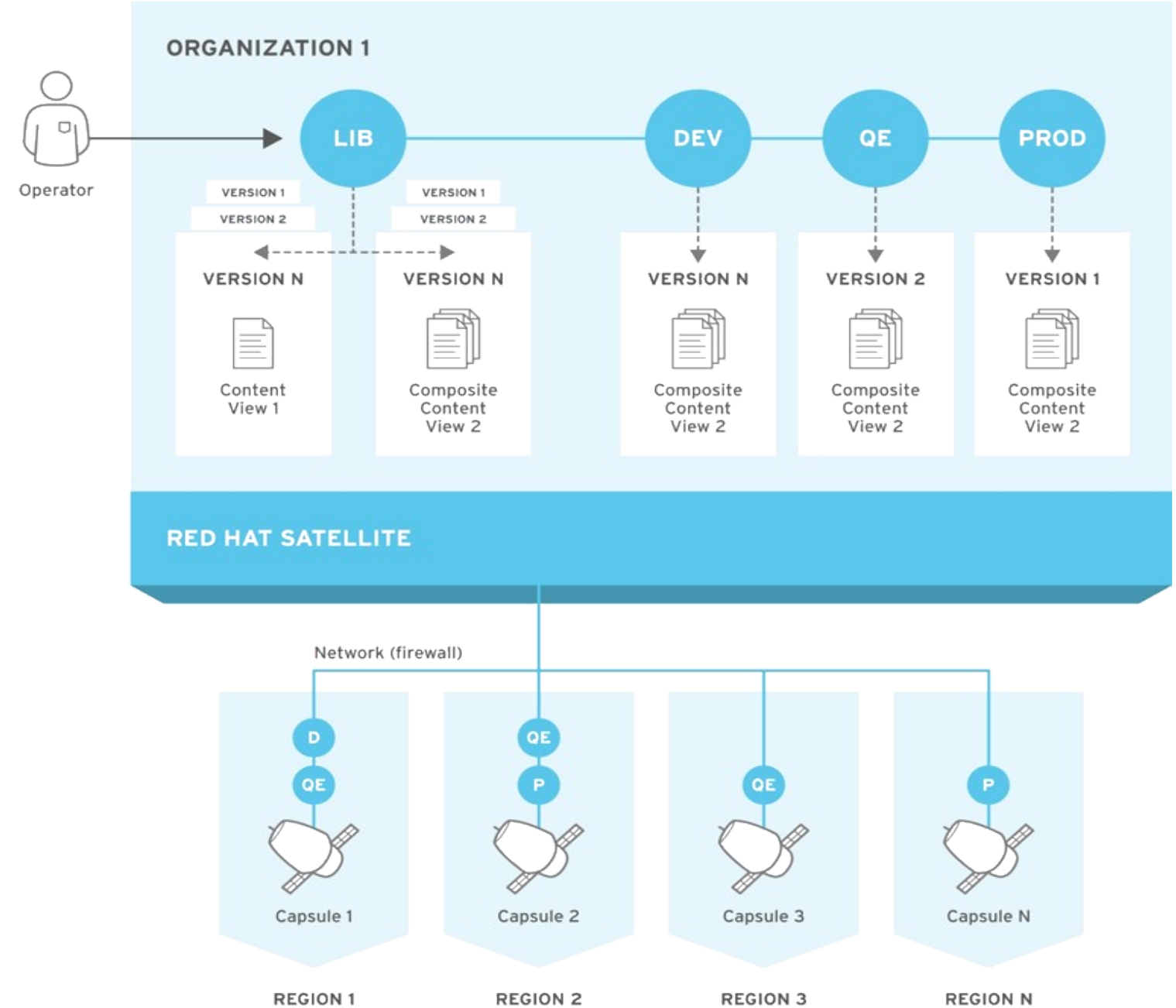
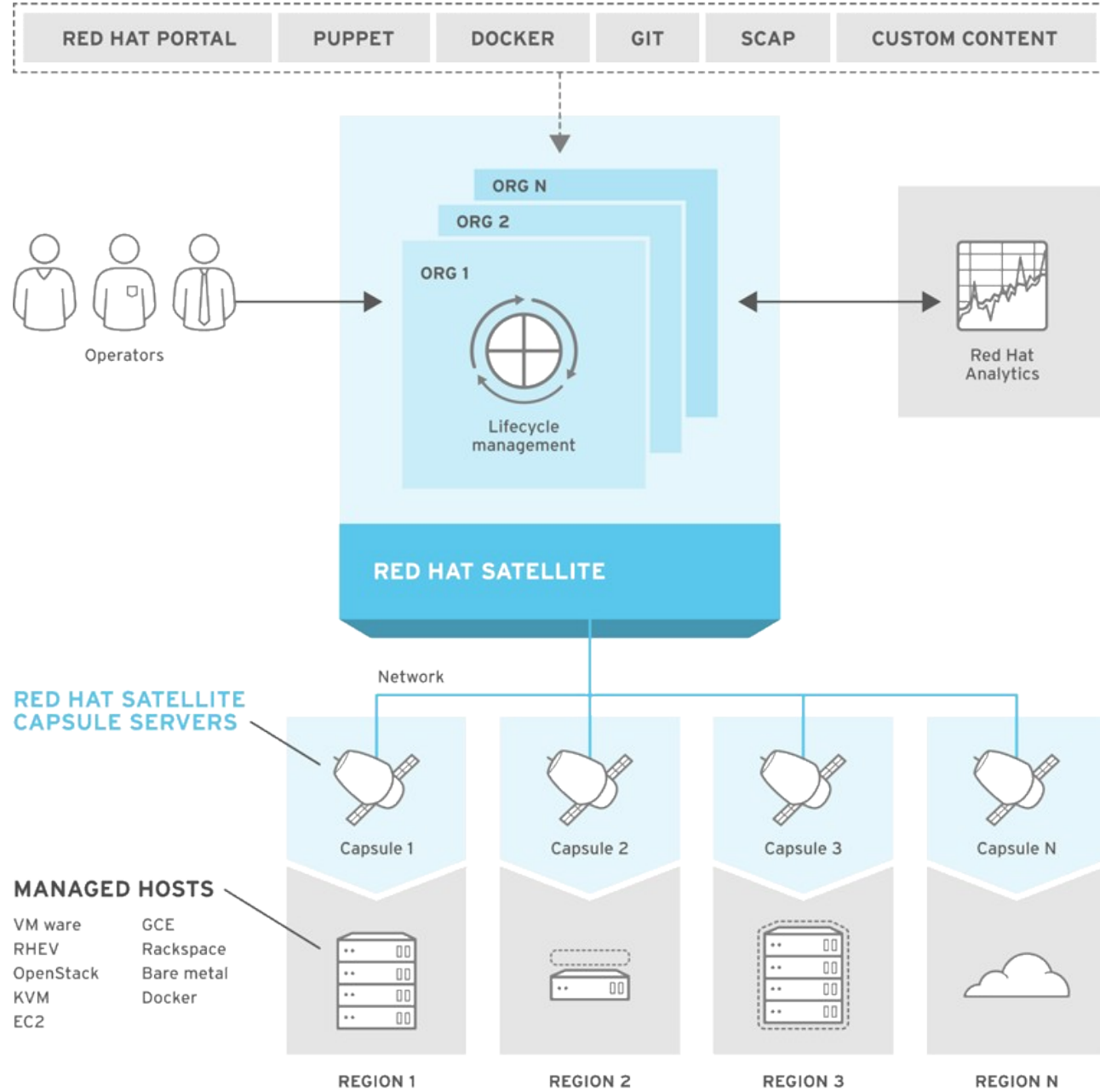
Configure using Puppet with fully managed & versioned content across your customized environments



Deploy Red Hat content with confidence that your subscriptions are delivering their full value



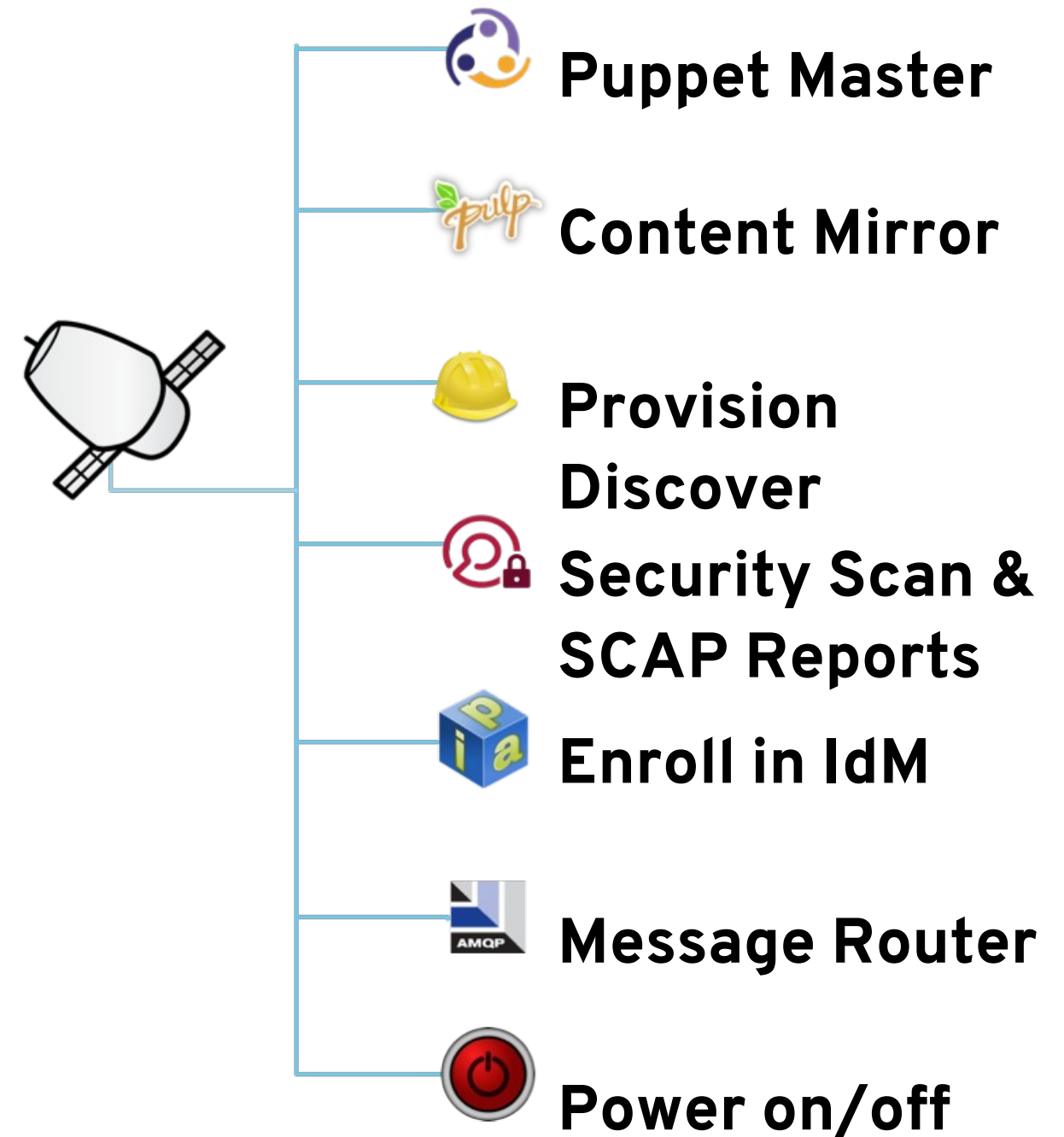
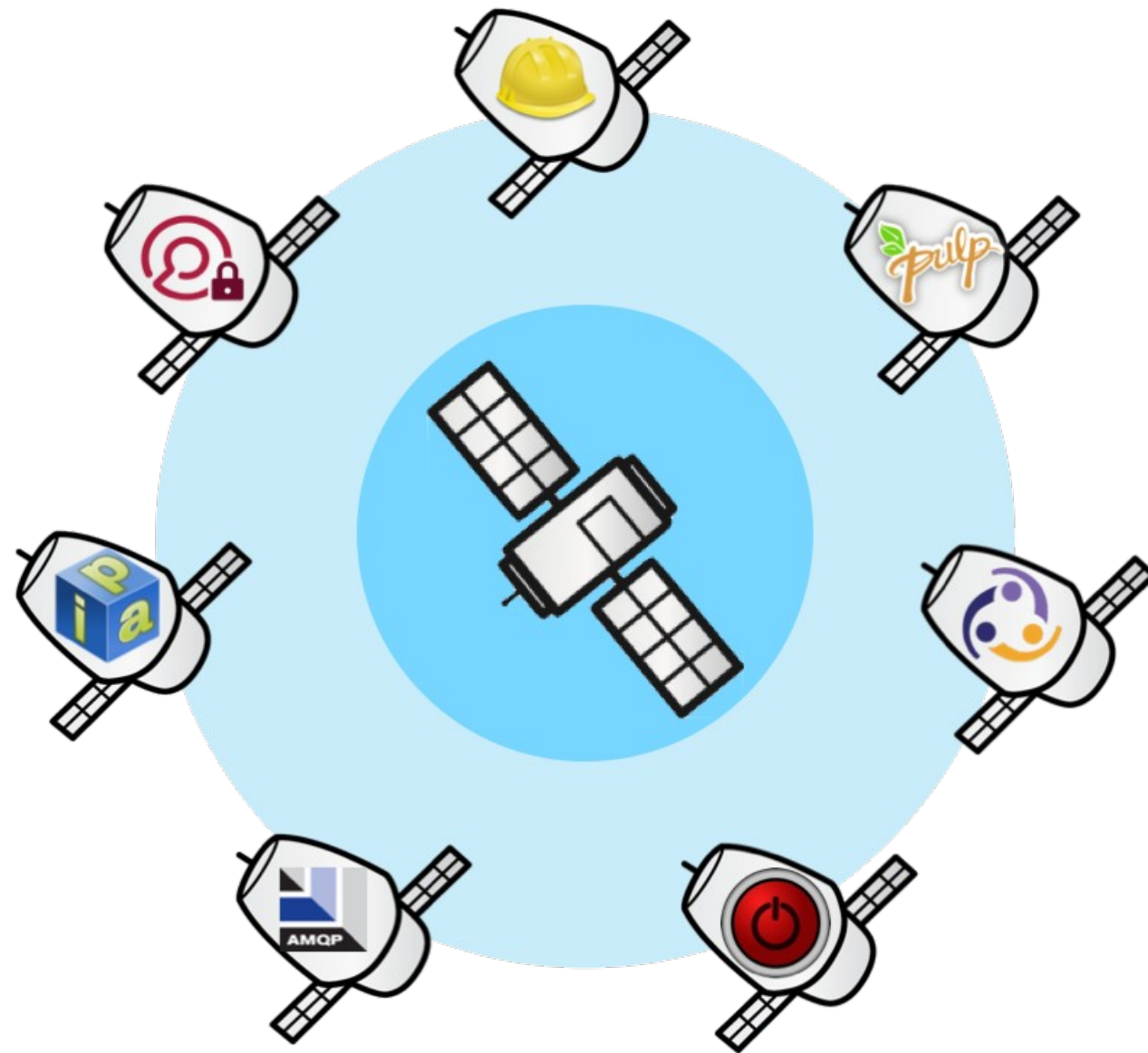
Satellite 6 Architecture



SATELLITE6_352601_0615

SATELLITE6_352601_0615

Federated Services with Capsules




Red Hat Access Insights

RED HAT SATELLITE Red Hat Access ▼ Admin User ▼

RHAI_Demo ▼ Monitor ▼ Content ▼ Hosts ▼ Configure ▼ Infrastructure ▼ Access Insights ▼ Administer ▼

Red Hat Access Insights



9 ACTIONS

77.8%

11.1%

11.1%

Use this chart to drill down and discover problems within your organization.

There are **9** action(s) detected from systems in your organization.

Overview

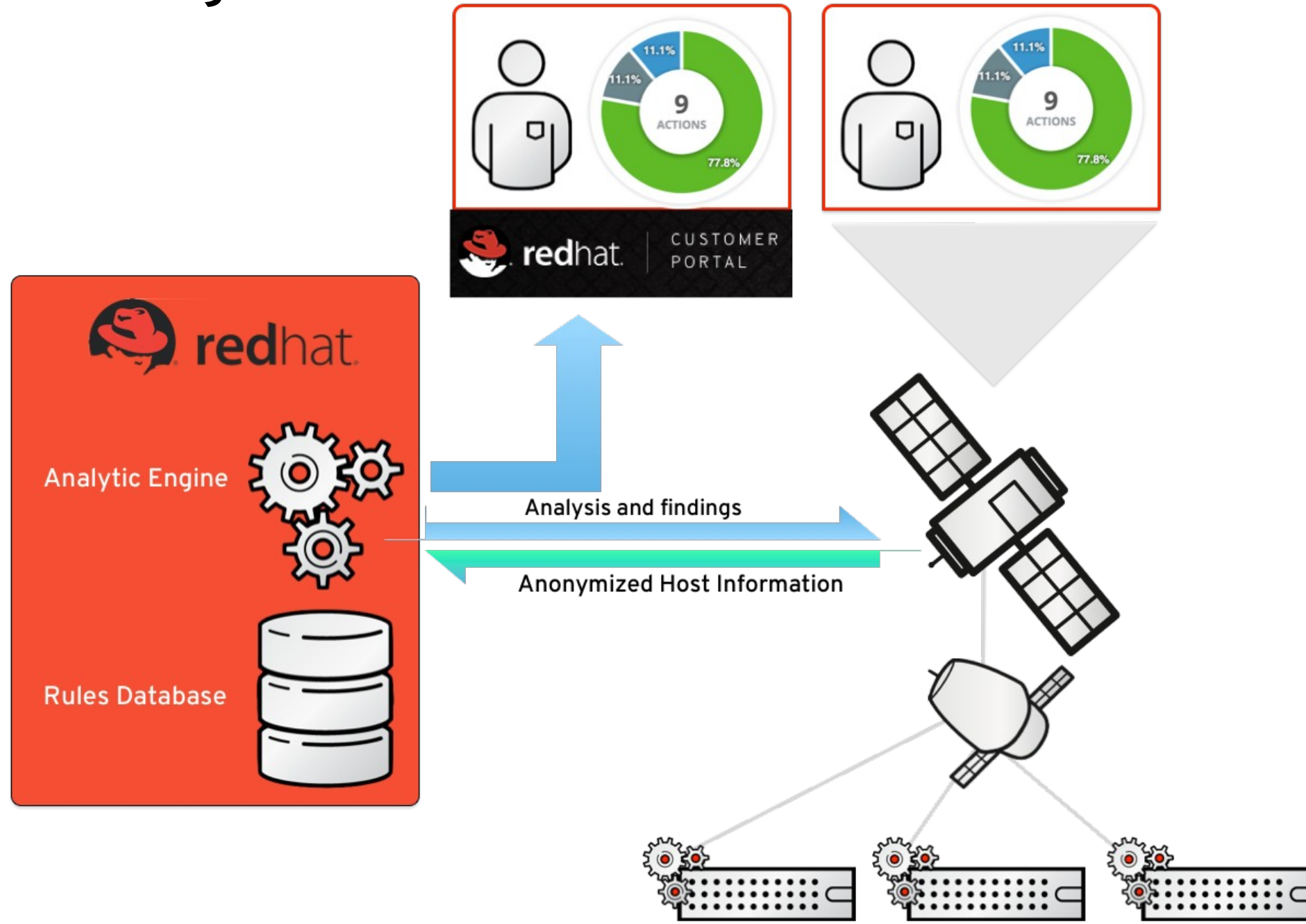
Overview

ALL INFO WARN ERROR

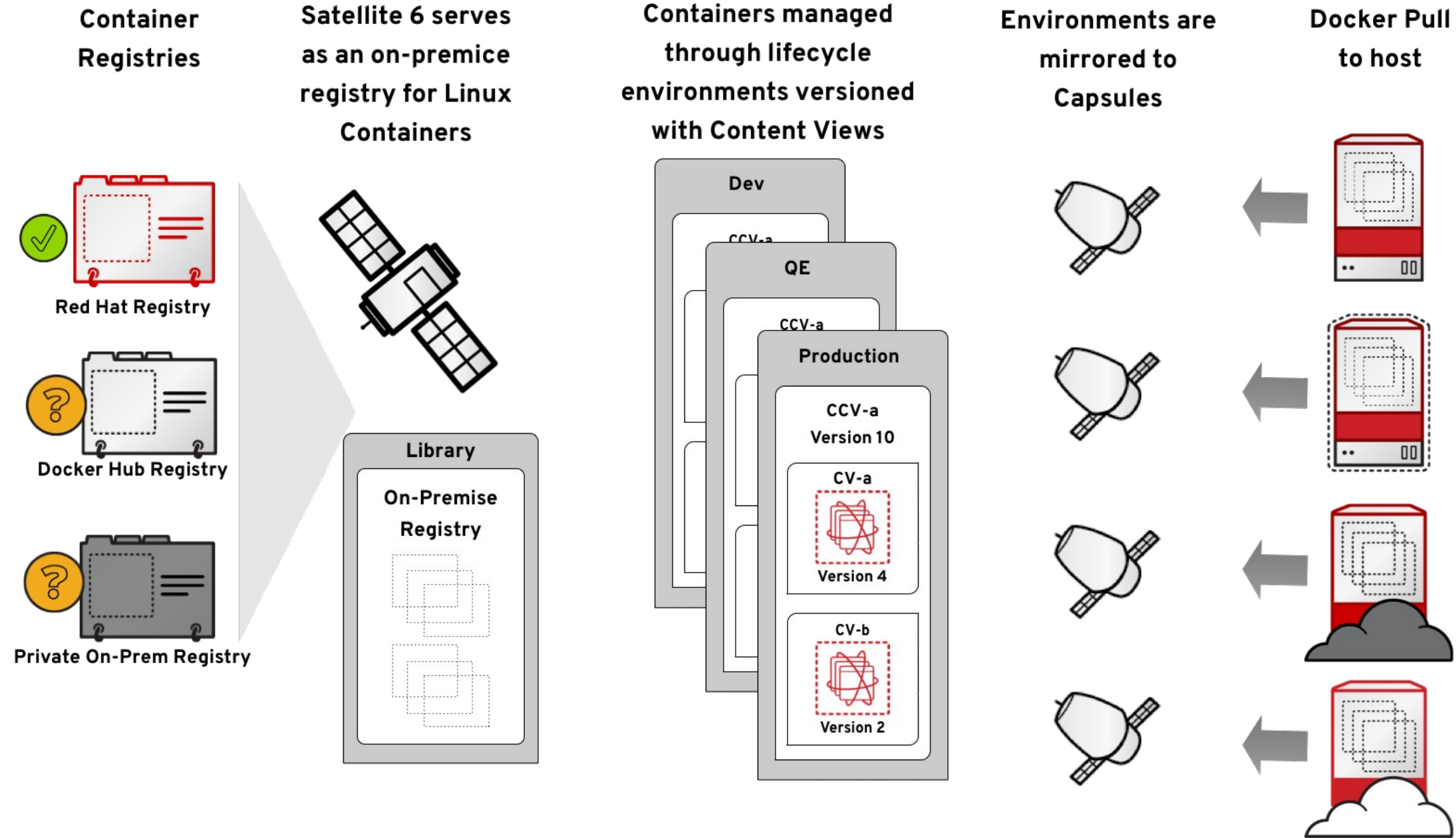
| Section | Count |
|-------------|-------|
| Security | 1 |
| Performance | 1 |
| Stability | 7 |

2 systems are not checking in[View systems and resolve](#)

Red Hat Access Insights



Container Management



Open SCAP Integration

RED HAT SATELLITE

Auroracloud Monitor Content Containers Hosts Configure Infrastructure Access Insights

Red Hat Access Admin User

Compliance policy: RHEL6_Common_Profile_(STIG)_Policy

Hosts Breakdown

| | |
|-------------------------------|---|
| Compliant with the policy | 0 |
| Not compliant with the policy | 2 |
| Inconclusive results | 0 |
| Never audited | 0 |

Total hosts: 2

Host Breakdown Chart

100%
Incompliant h...

latest reports for policy: RHEL6_Common_Profile_(STIG)_Policy

| Host | Date | Passed | Failed | Other | |
|--------------------------------|--------------------|--------|--------|-------|-------------|
| crash-node-0001.auroracloud... | about 10 hours ago | 108 | 108 | 0 | View Report |
| crash-node-0002.auroracloud... | 16 days ago | 107 | 109 | 0 | View Report |
| crash-node-0001.auroracloud... | 16 days ago | 108 | 108 | 0 | View Report |



Guide to the Secure Configuration of Red Hat Enterprise Linux 6



This guide presents a catalog of security-relevant configuration settings for Red Hat Enterprise Linux 6. It is a rendering of content structured in the eXtensible Configuration Checklist Description Format (XCCDF) in order to support security automation. The SCAP content is available in the `scap-security-guide` package which is developed at <http://fedorahosted.org/scap-security-guide>.

Providing system administrators with such guidance informs them how to securely configure systems under their control in a variety of network roles. Policy makers and baseline creators can use this catalog of settings, with its associated references to higher-level security control catalogs, in order to assist them in security baseline creation. This guide is a catalog, not a checklist, and satisfaction of every item is not likely to be possible or sensible in any operational scenario. However, the XCCDF format enables granular selection and adjustment of settings, and their association with OVAL and OCL content provides an automated checking capability. Transformations of this document, and its associated automated checking content, are capable of providing baselines that meet a diverse set of policy objectives. Some example XCCDF Profiles, which are selections of items that form checklists and can be used as baselines, are available with this guide. They can be processed, in an automated fashion, with tools that support the Security Content Automation Protocol (SCAP). The DISA STIG for RHEL 6, which provides required settings for US Department of Defense systems, is one example of a baseline created from this guidance.

Do not attempt to implement any of the settings in this guide without first testing them in a non-operational environment. The creators of this guidance assume no responsibility whatsoever for its use by other parties, and makes no guarantees, expressed or implied, about its quality, reliability, or any other characteristic.

Evaluation Characteristics

| Target machine | CPE Platforms | Addresses |
|----------------------------------|---|---|
| crash-node-0001.auroracloud.info | <ul style="list-style-type: none"> cpe:/redhatenterprise_linux/6 cpe:/redhatenterprise_linux/6:client | <ul style="list-style-type: none"> IPV4 127.0.0.1 IPV4 192.168.126.103 IPV6 0:0:0:0:0:0:1 IPV6 fe80:0:0:0:5054:ff:feeb:66a0 MAC 00:00:00:00:00:00 MAC 52:54:00:EB:66:A0 |
| Benchmark URL | /var/lib/openscap/content/515536619e8c4958f4cb95b868f | |
| Benchmark ID | xccdf_org.ssgproject.content_benchmark_RHEL-6 | |
| Profile ID | xccdf_org.ssgproject.content_profile_stig-rhel6-server-upst | |
| Started at | 2015-06-12T09:14:18 | |
| Finished at | 2015-06-12T09:15:27 | |
| Performed by | root | |

Compliance and Scoring

The target system did not satisfy the conditions of 108 rules! Furthermore, the results of 2 rules were inconclusive. Please review rule results and consider applying remediation.

Rule results

108 passed 108 failed 8 other

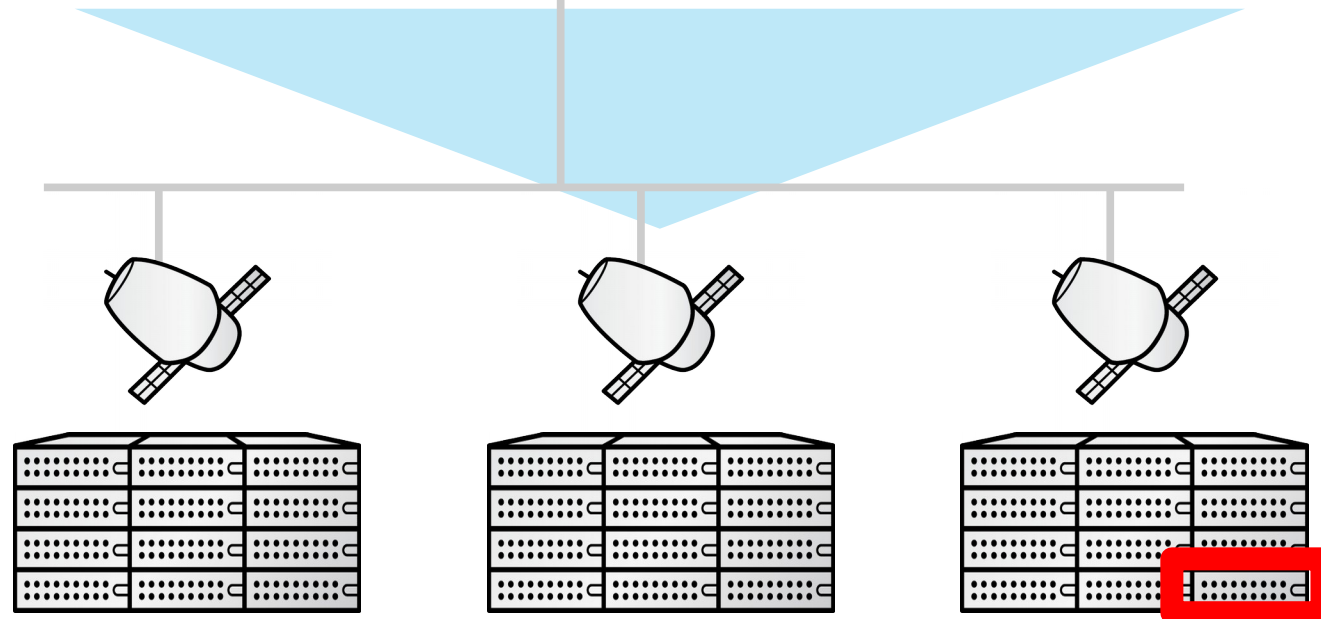
Severity of failed rules

0 62 low 42 medium 4 high

Score

| Scoring system | Score | Maximum | Percent |
|---------------------------|-----------|------------|---------|
| urn:xccdf:scoring/default | 69.335884 | 100.000000 | 69.34% |

Rule Overview



Discovery



RED HAT SATELLITE Red Hat Access Admin User

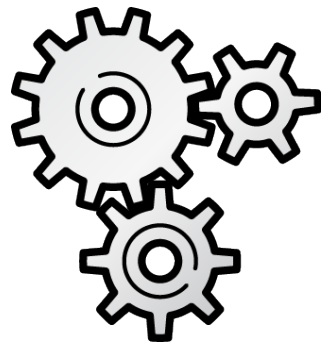
Default Organization@Default Location Monitor Content Containers Hosts Configure Infrastructure Access Insights

Administer

Discovery Rules

New Rule

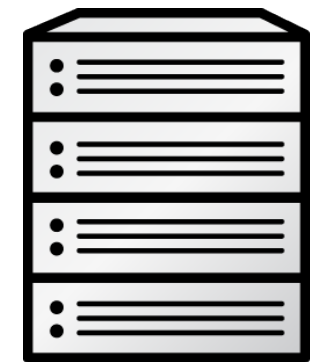
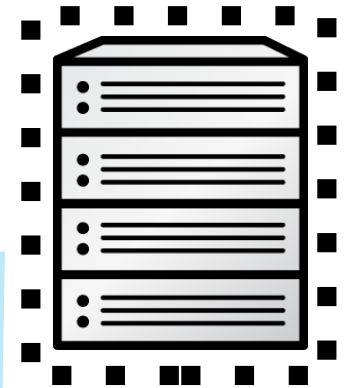
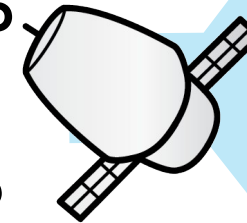
| Name | Priority | Query | Host group | Hosts/limit | Enabled | |
|---------------------------------|----------|--|--------------------|-------------|---------|--------|
| 2_CPU | 0 | cpu_count > 1 | RHEL6_Dev_Servers | 0 / 0 | true | Delete |
| 16_GBYTE_MEM | 0 | memory > 16GB | RHEL6_Dev_Servers | 0 / 4 | true | Delete |
| DefLOC_On_124 | 0 | location = "Default Location" and subnet = 192.168.124.0 | RHEL6_Dev_Servers | 0 / 0 | true | Delete |
| KVM_Big_Storage | 0 | model = KVM and disks_size > 2TBytes | RHEL6_Dev_Servers | 0 / 0 | true | Delete |
| 1_CPU | 1 | cpu_count >= 1 | RHEL7_Prod_Servers | 1 / 0 | true | Delete |



1



DHCP
DNS
TFTP

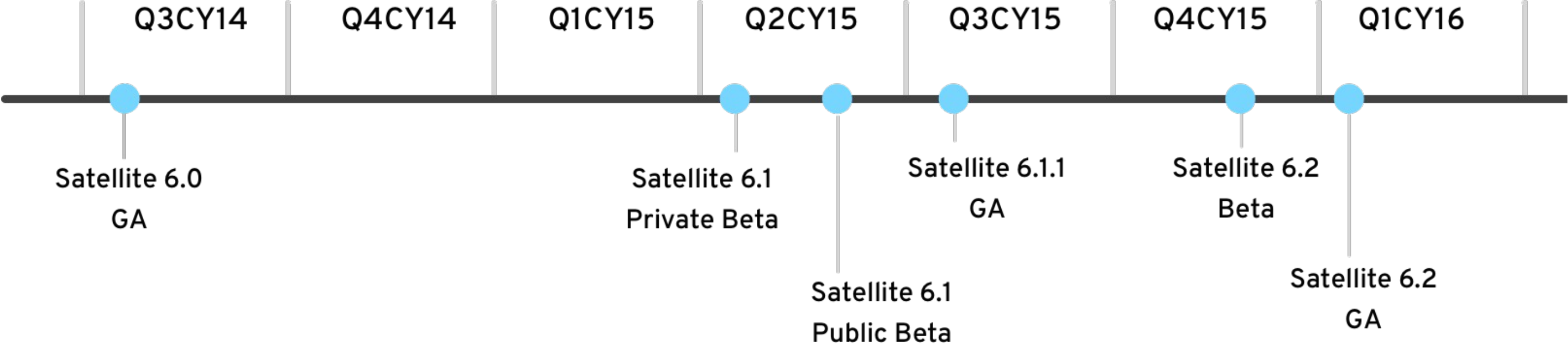


2

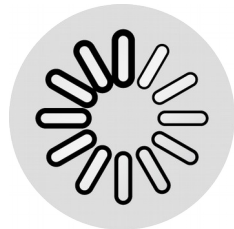


High Level Roadmap for 6.2

Satellite 6 Release Schedule



RED HAT SATELLITE 6.2



GENERAL IMPROVEMENTS

Remote Execution | Dynamic Host Collection | Inter-Satellite Sync



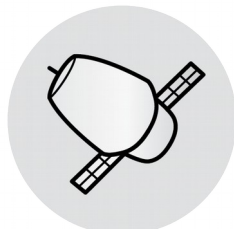
ATOMIC OSTREE AND CONTAINERS

On-premise Enterprise Registry for Atomic OS and Docker containers



SOE V2 with Content Views

Multi-version Support | Preview Function | Sharing Faster Puppet Module Updates | Centrally Managed Smart Variables



CAPSULE IMPROVEMENTS

Observability | Greater Resiliency | Improved Command and Control



HIGH AVAILABILITY

Satellite Server in Active Active Cluster | Capsules Load Balanced

Questions?



redhat.®